



# Layered topological semimetal GaGeTe: New polytype with non-centrosymmetric structure



S. Gallego-Parra<sup>a</sup>, E. Bandiello<sup>a</sup>, A. Liang<sup>b</sup>, E. Lora da Silva<sup>c</sup>, P. Rodríguez-Hernández<sup>d</sup>, A. Muñoz<sup>d</sup>, S. Radescu<sup>d</sup>, A.H. Romero<sup>e</sup>, C. Drasar<sup>f</sup>, D. Errandonea<sup>b</sup>, F.J. Manjón<sup>a,\*</sup>

<sup>a</sup> Instituto de Diseño para La Fabricación y Producción Automatizada, MALTA Consolider Team, Universitat Politècnica de València, 46022 Valencia, Spain

<sup>b</sup> Departamento de Física Aplicada-ICMUV, MALTA Consolider Team, Universitat de València, 46100 Burjassot, Spain

<sup>c</sup> IFIMUP, Departamento de Física e Astronomia, Faculdade de Ciências, Universidade Do Porto, 4169-007 Porto, Portugal

<sup>d</sup> Departamento de Física, Instituto de Materiales y Nanotecnología, MALTA Consolider Team, Universidad de La Laguna, La Laguna, 38205 Tenerife, Spain

<sup>e</sup> Department of Physics and Astronomy, West Virginia University, Morgantown, WV 26506-6315, USA

<sup>f</sup> Faculty of Chemical Technology, University of Pardubice, Pardubice 532 10, Czech Republic

## ARTICLE INFO

### Article history:

Received 4 August 2022

Received in revised form

5 October 2022

Accepted 10 October 2022

Available online 22 October 2022

### Keywords:

GaGeTe

Topological semimetal

Non-inversion symmetry

## ABSTRACT

GaGeTe is a layered van der Waals material composed of germanene and GaTe sublayers that has been recently predicted to be a basic  $Z_2$  topological semimetal. To date, only one polytype of GaGeTe is known with trigonal centrosymmetric structure ( $\alpha$  phase, space group  $R\bar{3}m$ , No. 166). Here we show that as-grown samples of GaGeTe show traces of at least another polytype with hexagonal non-centrosymmetric structure ( $\beta$  phase, space group  $P6_3mc$ , No. 186). Moreover, we suggest that another bulk hexagonal polytype ( $\gamma$  phase, space group  $P\bar{3}m1$ , No. 164) could also be found near room conditions. Both  $\alpha$  and  $\beta$  polytypes have been identified and characterized by means of X-ray diffraction and Raman scattering measurements with the support of *ab initio* calculations. We provide the vibrational properties of both polytypes and show that the Raman spectrum reported for GaGeTe almost forty years ago and attributed to the  $\alpha$  phase, was, in fact, that of the secondary  $\beta$  phase. Additionally, we show that a Fermi resonance occurs in  $\alpha$ -GaGeTe under non-resonant excitation conditions, but not under resonant excitation conditions. Theoretical calculations show that bulk  $\beta$ -GaGeTe is a non-centrosymmetric weak topological semimetal with even smaller lattice thermal conductivity than centrosymmetric bulk  $\alpha$ -GaGeTe. In perspective, our work paves the way for the control and engineering of GaGeTe polytypes to design and implement complex van der Waals heterostructures formed by a combination of centrosymmetric and non-centrosymmetric layers of up to three different polytypes in a single material, suitable for a number of fundamental studies and technological applications.

© 2022 The Authors. Published by Elsevier Ltd. This is an open access article under the CC BY-NC-ND license (<http://creativecommons.org/licenses/by-nc-nd/4.0/>).

## 1. Introduction

The study of topological semimetals (TSMs) is a hot topic in Condensed Matter Science. Many research efforts have been recently focused on the search for TSMs, both of Dirac and Weyl types, to find Dirac and Weyl fermions almost 100 years after their theoretical predictions [1]. In fact, Dirac TSMs can be driven either into a Weyl TSM or a topological insulator by symmetry breaking or by increasing spin-orbit coupling, respectively. TSMs have unusual electronic properties, such as extremely high carrier mobility, chiral

effects, negative magnetoresistance, anomalous Hall effect, and low lattice thermal conductivity. These extraordinary effects promise to be useful for many devices and applications, like optical detectors, catalysis, spintronics, valleytronics, straintronics, and highly efficient thermoelectrics [2].

Since the discovery of the Dirac TSM  $Cd_3As_2$ , a three-dimensional analog to graphene [2], the research work on TSMs has greatly increased. Transition metal dichalcogenides, as well as Ta and Nb pnictogenides, have been thoroughly studied in the last decade and at present a plethora of new TSMs are under examination. In fact, non-centrosymmetric topological materials have attracted the most recent interest since they show non-trivial phenomena that could complement centrosymmetric variants in topological electronic devices. In particular, symmetry breaking

\* Corresponding author.

E-mail address: [fjmanjon@fis.upv.es](mailto:fjmanjon@fis.upv.es) (F.J. Manjón).

allows many exotic properties to emerge in topological materials, such as the ferroelectricity and pyroelectricity [3], surface-dependent topological electronic states [4], as well as non-linear Hall effect and non-linear photocurrent [5–8].

Among TSMs, one of the less studied compounds is GaGeTe, which has been recently cataloged as a basic  $Z_2$  TSM with very interesting properties [9]. GaGeTe is a layered material with a very small bandgap and huge carrier mobility that is composed of a germanene-like sublayer embedded between two GaTe sublayers [10,11] of InSe or GaSe-type [12]. Therefore, GaGeTe is a van der Waals (vdW) material that is chemically stable in air, water, and NaOH at room conditions. Additionally, it has been recently predicted to be both dynamically and thermodynamically stable at high temperatures [13] and it can be easily exfoliated, being very promising for 2D electronic and optoelectronic applications.

GaGeTe was synthesized more than 40 years ago [10] and soon after its structural [11] and vibrational [14] properties were investigated at room conditions. To our knowledge, only a single polytype of this compound is known (hereafter,  $\alpha$  phase). It crystallizes in a trigonal centrosymmetric structure (space group (s.g.)  $R\bar{3}m$ , No. 166) whose lattice parameters in a hexagonal setting are:  $a = 4.048 \text{ \AA}$  and  $c = 34.731 \text{ \AA}$ .  $\alpha$ -GaGeTe is composed by three GaGeTe monolayers stacked along the  $c$  axis of the hexagonal unit cell (Fig. 1(left)). A 3D view of the structure is provided in Fig. S1(left) in the Electronic Supplementary Information (ESI). Each layer of GaGeTe has  $P\bar{3}m1$  symmetry and consists of six atomic planes Te-Ga-Ge-Ge-Ga-Te perpendicular to the hexagonal  $c$ -axis, being the intralayer forces between atoms of covalent-type and the force between the layers of vdW type. In this layered structure, Ga and Ge atoms show tetrahedral coordination, while Te atoms are threefold coordinated, as expected from the covalent and vdW forces present in the crystalline structure.

From the theoretical point of view, initial studies suggested that bulk  $\alpha$ -GaGeTe is a 3D strong topological insulator [15]. Moreover, monolayer and few-layer GaGeTe were predicted as promising 2D materials for electronic and optoelectronic applications, including solar cells and field-effect transistors, due to their high thermal stability, high electron mobility, and control of a wide tunable bandgap with the control of the number of monolayers or the compressive or tensile strain applied to the layers [13]. On top of

that, theoretical calculations in monolayer  $\alpha$ -GaGeTe predicted interesting spintronic properties that can be controlled by the modulation of an applied electric field due to the Rashba-type spin-orbit coupling [16]. These features would allow turning an indirect bandgap into a direct one, making monolayers of  $\alpha$ -GaGeTe promising candidates in 2D nanoelectronics and spintronics [16]. More recently, *ab initio* calculations of the electronic properties of a Germanene/ $\alpha$ -GaGeTe heterostructure have shown the ability to tune the bandgap via an applied voltage or strain, thus making possible a Germanene-based field-effect transistor [17].

From the experimental point of view,  $\alpha$ -GaGeTe has been studied for its possible use as a thermoelectric material [18,19], finding that its relatively low power factor increases with temperature, making it a promising material for high-temperature applications. More recently,  $\alpha$ -GaGeTe has been shown as a promising candidate for 2D transistors and photodetectors with ON/OFF current ratios larger than many other reported field-effect transistors based 2D materials and a photoresponsivity higher than MoS<sub>2</sub>, graphene, and few-layer black phosphorus [20]. Furthermore, a short-wavelength infrared detector based on  $\alpha$ -GaGeTe, with notable performance in terms of speed and bandwidth, has been recently demonstrated [21].

Despite recent advances in the characterization of many properties of bulk and monolayer  $\alpha$ -GaGeTe, several of their basic properties are still under discussion. For instance, the nature and value of the bandgap in bulk  $\alpha$ -GaGeTe has been a recently resolved puzzle. Initial studies suggested that  $\alpha$ -GaGeTe was a degenerate p-type semiconductor with a bandgap around 1.0 eV and low hole mobility around  $40 \text{ cm}^2 \text{ V}^{-1} \text{ s}^{-1}$  [18,19]. However, recent synchrotron-based high-resolution angle-resolved photoemission spectroscopy measurements combined with band structure calculations have shown that bulk  $\alpha$ -GaGeTe has a very small indirect bandgap and features strong topological properties [9]. In fact, it has been proposed to be the first observed basic  $Z_2$  TSM with three types of charge carriers: bulk electrons and holes as well as surface electrons. This discovery confirms the fundamental importance of  $\alpha$ -GaGeTe for the understanding and applications of topological materials.

Given that electron-phonon interactions are crucial in TSMs, recent studies of TSMs have remarked the necessity of the study of

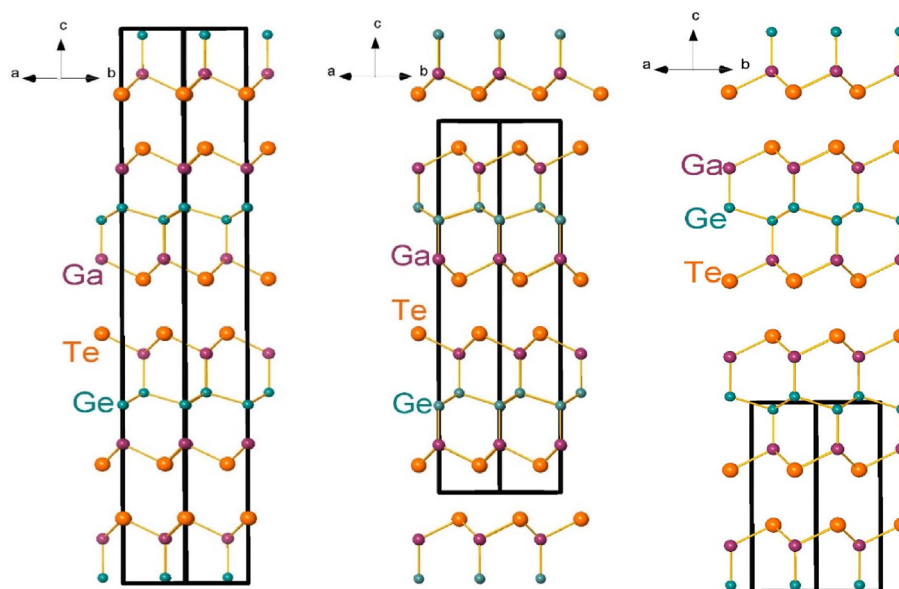


Fig. 1. Crystal structure of  $\alpha$ -GaGeTe (left),  $\beta$ -GaGeTe (center), and  $\gamma$ -GaGeTe (right) polytypes.

the vibrational properties of these compounds in order to understand their transport properties [22,23]. In particular, anomalous profiles of Raman-active modes, like Fano resonances [24–26], anomalous angle-dependence of Raman-active modes [27], double resonance Raman modes [28], and quasielastic scattering [29] have been observed in Raman scattering (RS) measurements. Moreover, RS measurements, naturally sensitive to the crystal symmetry, are very important to reveal the inversion symmetry breaking, since the non-centrosymmetry is a prerequisite for realizing Weyl fermions in non-magnetic materials [30]. In this context, very little is known regarding the vibrational properties of bulk  $\alpha$ -GaGeTe. To the best of our knowledge, only one Raman study of GaGeTe at 77 and 297 K has been performed [14]. In that work, six Raman modes were observed for this TSM and attributed to five out of six Raman-active modes and one IR-active mode of the  $R\bar{3}m$  structure; however, several observed Raman bands could not be explained and the observed Raman modes still have not been discussed in the light of modern *ab initio* calculations. Additionally, the phonon dispersion curves and phonon density of states of bulk  $\alpha$ -GaGeTe are still unknown. Curiously, the vibrational properties of the monolayer of  $\alpha$ -GaGeTe (with s.g.  $P\bar{3}m1$ ) have been recently studied and its lattice thermal conductivity was found to be comparable to that of MoS<sub>2</sub> and much lower than that of graphene [31], which promises a use in very efficient thermoelectric materials.

In this work, we have studied the RS spectra of bulk GaGeTe at room temperature by exciting our samples with two different laser lines (on- and off-resonance). Two different RS spectra have been mainly observed in bulk samples. In order to clearly establish which one of these is the actual RS spectra of  $\alpha$ -GaGeTe, we have performed *ab initio* calculations that are compared to our RS measurements. As a result, we show that the previously reported Raman modes [14] do not correspond to  $\alpha$ -GaGeTe, but to another polytype ( $\beta$ -GaGeTe) that is a secondary phase that coexists with  $\alpha$ -GaGeTe. The new  $\beta$  polytype has non-centrosymmetric hexagonal structure (s.g.  $P6_3mc$ , No. 186, see Fig. 1(center) and Fig. S1(center)). Moreover, we suggest the possible existence of a third polytype of bulk GaGeTe ( $\gamma$ -GaGeTe) with a centrosymmetric hexagonal structure (s.g.  $P\bar{3}m1$ , No. 164, see Fig. 1(right) and Fig. S1(right)). The existence of  $\beta$ -GaGeTe has been confirmed not only by RS measurements but also by powder X-ray diffraction (XRD) measurements at ambient conditions. *Ab initio* calculations not only confirm that  $\beta$ -GaGeTe is energetically competitive with  $\alpha$ -GaGeTe but they also show a nice match of the simulated structural and vibrational properties with those experimentally observed. Therefore, we provide here a complete structural and vibrational characterization of both  $\alpha$ -GaGeTe and  $\beta$ -GaGeTe. In particular, we comment on the existence of a Fermi resonance in the mid-frequency modes of  $\alpha$ -GaGeTe, but not in  $\beta$ -GaGeTe. The Fermi resonance in the RS spectrum of  $\alpha$ -GaGeTe is clearly observed under non-resonant excitation conditions, but it is not observed under resonant excitation conditions. To our knowledge, this phenomenon has not been observed in solids before. Moreover, we confirm that bulk  $\beta$ -GaGeTe is a non-centrosymmetric weak TSM that exhibits a smaller lattice thermal conductivity than bulk  $\alpha$ -GaGeTe at room conditions.

We believe that our work, with its in-depth experimental and theoretical analysis of both  $\alpha$  and  $\beta$  polytypes, may stimulate further studies to control and engineer the different GaGeTe polytypes for a number of fundamental studies and technological applications, in particular those of vdW heterostructures implemented by stacking different polytypes of a single material.

## 2. Material and methods

### 2.1. Experimental details

GaGeTe crystals grown using a modified Bridgman method as described in Ref. [18] and used in Refs. [18,19] have been used in this work. Powder XRD measurements of as-grown samples have been performed with Cu K<sub>α1</sub> radiation on a Rigaku Ultima IV diffractometer to verify the crystalline structure of the samples. The structural analysis has been performed using the Rietveld method. For  $\alpha$ -GaGeTe, we used as a starting model the structure determined by Fenske et al. [11] and for  $\beta$ -GaGeTe, we used the structure determined from DFT calculations in this work.

Room-temperature unpolarized and polarized RS measurements on bulk GaGeTe crystals were performed with a Horiba Jobin Yvon LabRAM HR UV spectrometer equipped with a thermoelectrically cooled multichannel CCD detector. Raman signals were excited with both the 532-nm (green) line of a solid state laser and the 632.8-nm (red) line of a HeNe laser. For the green line, common edge filters allowing measurements above 30–50 cm<sup>-1</sup> were used. For the red line, an ultra-low frequency (ULF) filter composed of three Volume Bragg Grating notch filters allowed measurements down to 10 cm<sup>-1</sup>. In all measurements, a spectral resolution smaller than 3 cm<sup>-1</sup> is obtained. RS measurements at high pressures were performed by inserting small 100 × 100 × 20 μm<sup>3</sup> samples into a diamond anvil cell, using a methanol-ethanol mixture as a pressure-transmitting medium and a ruby chip as pressure sensor [32].

### 3. Theoretical calculations

*Ab initio* total-energy calculations at 0 K for the  $R\bar{3}m$ ,  $P6_3mc$ , and  $P\bar{3}m1$  phases of GaGeTe were performed within the framework of density functional theory (DFT) [33] with the Vienna Ab-initio Simulation Package (VASP) [34], using the pseudopotential method and the projector augmented waves (PAW) scheme [35,36]. The valence electron configurations of Ga, Ge, and Te atoms adopted are 3d<sup>10</sup>4s<sup>2</sup>4p<sup>1</sup>, 3d<sup>10</sup>4s<sup>2</sup>4p<sup>2</sup>, and 5s<sup>2</sup>5p<sup>4</sup>, respectively. In this work, the generalized gradient approximation (GGA) with the Perdew-Burke-Ernzerhof for solids (PBEsol) parametrization [37] and the Perdew-Burke-Ernzerhof [38] parametrization including the dispersion corrections of Grimme (PBE-D3) [39] were used for the exchange and correlation energy. A dense Monkhorst-Pack grid [40] of special k-points (6 × 6 × 6 for  $R\bar{3}m$ , 20 × 20 × 4 for  $P6_3mc$ , and 8 × 8 × 4 for  $P\bar{3}m1$  phases, respectively) along the Brillouin zone (BZ) and a plane-wave basis set with energy cutoffs of 540 eV were used. All atomic degrees of freedom, including lattice constants and atomic parameters, were fully relaxed with self-consistent convergence criteria of 0.004 eV/Å and 10<sup>-6</sup> eV for the atomic forces and the total energy, respectively.

Lattice-dynamical properties with VASP were obtained for the  $\Gamma$ -point of the BZ using the direct-force constant approach within the PBEsol and PBE-D3 prescription in order to compute the atomic forces. Additionally, the PHONON code [41,42] was used to simulate the RS spectrum of the different phases. This method involves the construction of a dynamical matrix at the  $\Gamma$  point of the BZ. Separate calculations of the atomic forces are needed and performed by small independent displacements of atoms from the equilibrium configuration within the primitive cell, whose number depends on the crystal symmetry. Highly converged results on forces are required for the calculation of the dynamical matrix [42]. The subsequent diagonalization of the dynamical matrix provides the

frequencies of the normal modes. Moreover, these calculations allow the identification of the symmetry and eigenvectors of the vibrational modes in each structure at the  $\Gamma$  point. To obtain the phonon dispersion curves along high-symmetry directions of the BZ and the one-phonon density of states we performed similar calculations using appropriate supercells, which allow the phonon dispersion at k-points to be obtained commensurate with the supercell size [42]. The J-ICE software [43] was used to plot the atomic vibrations of bulk  $\alpha$ -GaGeTe and bulk  $\beta$ -GaGeTe given in ESL. The two-phonon (or joint phonon) density of states (DOS) was calculated for bulk  $\alpha$ -GaGeTe and bulk  $\beta$ -GaGeTe with the electronic structure ABINIT [44,45] using the same correction considered for the structural relaxation. The search of competitive phases was performed by using two complementary approaches; on one side, we used symmetry arguments to build possible phases and, on the other side, we use a full structural search method. The Minima Hopping Method was adopted, following the original implementation [46] and with parameters similar to those used in Ref. [47].

Lattice thermal conductivity and phonon lifetimes were calculated by employing the PHONO3PY code [48] and VASP is used as the calculator for the third-order (anharmonic) interatomic force constants. A  $2 \times 2 \times 2$  supercell is used, with a q mesh of  $20 \times 20 \times 10$  for both bulk  $\alpha$ -GaGeTe and bulk  $\beta$ -GaGeTe with the tetrahedron method to perform the integration for the phonon lifetime calculation. The lattice thermal conductivity and phonon lifetimes were computed with the single-mode relaxation-time approximation, to solve the Boltzmann transport equations.

Finally, the topological properties of bulk  $\alpha$ -GaGeTe and bulk  $\beta$ -

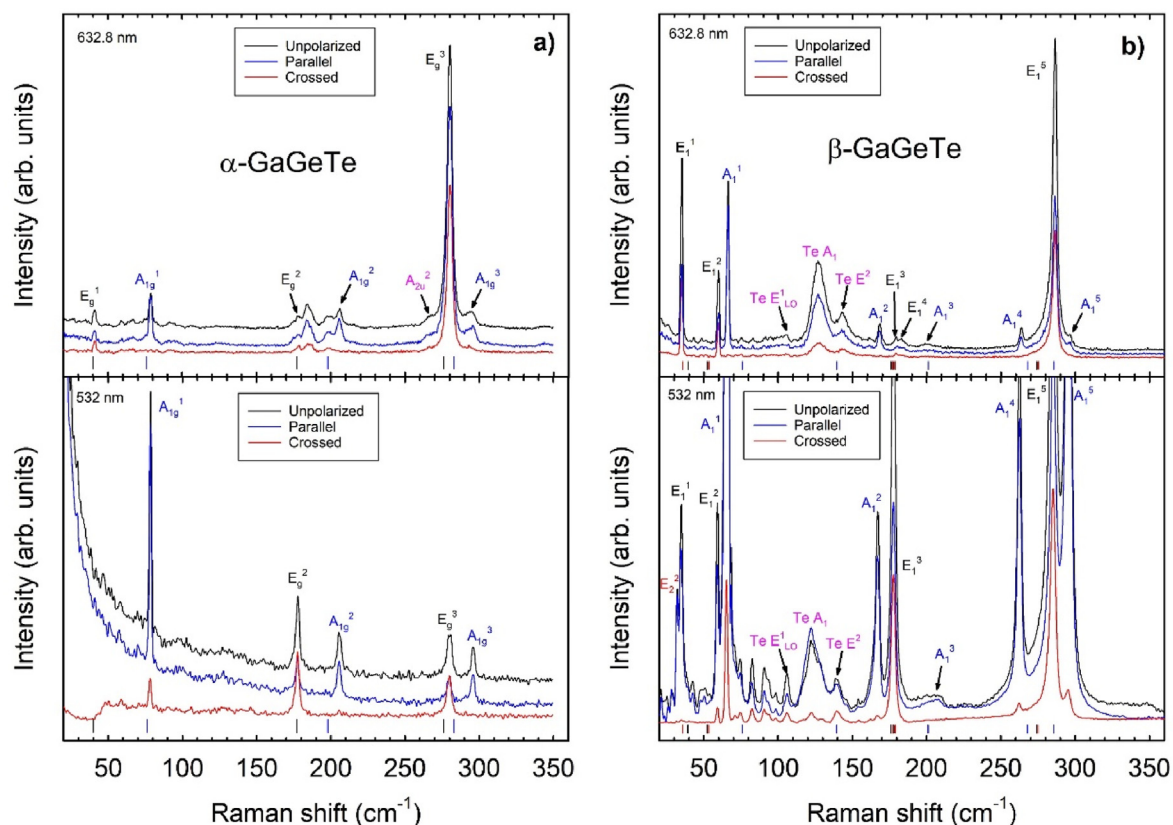
GaGeTe were analyzed by using an online tool which predicts the topological classification of materials with machine learning. The tool is based on gradient boosted trees trained with the ab-initio results from the topological quantum chemistry database [49].

## 4. Results and discussion

### 4.1. Structural and vibrational properties of bulk GaGeTe polytypes

As previously commented, the centrosymmetric trigonal  $R\bar{3}m$  structure of bulk  $\alpha$ -GaGeTe was established forty years ago [10,11], and soon after its vibrational properties were reported and discussed in relation to the  $R\bar{3}m$  structure [14]. In that work, it was reported that the RS spectrum of GaGeTe was different under resonant and non-resonant excitation conditions and that the RS spectra of GaGeTe showed more Raman modes than expected for the  $R\bar{3}m$  phase. Consequently, some modes were tentatively attributed to IR-active modes or second-order modes of the  $R\bar{3}m$  structure.

Fig. 2 shows the unpolarized and polarized (parallel and crossed) backscattering RS spectra of GaGeTe at room conditions when excited both under non-resonant conditions with the 632.8 nm (1.98 eV) red laser line and under resonant conditions with the 532 nm (2.33 eV) green laser line. Unexpectedly, we observe two types of RS spectra: i) The dominant RS spectra of the as-grown sample (Fig. 2a) and ii) the RS spectra obtained in a few places of the same sample (Fig. 2b). Curiously, the RS spectra of Fig. 2b is similar to that reported almost 40 years ago by López-Cruz et al. [14]. Eventually, both RS spectra could be simultaneously



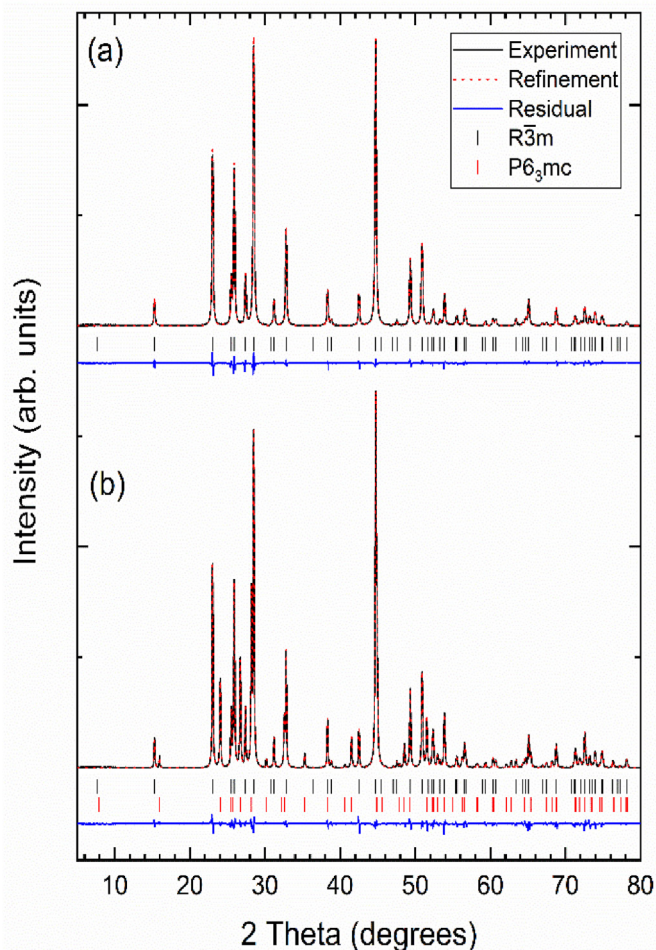
**Fig. 2.** Unpolarized and polarized (parallel and cross polarizations) RS spectra of bulk  $\alpha$ -GaGeTe (a) and bulk  $\beta$ -GaGeTe (b) at room conditions excited both under non-resonant (632.8 nm) and resonant (532 nm) conditions. The bottom marks correspond to the theoretically predicted frequencies for both polytypes (black and blue for E and A modes in  $\alpha$ -GaGeTe, respectively, and black, red, and blue for  $E_1$ ,  $E_2$ , and  $A_1$  modes in  $\beta$ -GaGeTe, respectively). (For interpretation of the references to colour in this figure legend, the reader is referred to the Web version of this article.)

measured (see Fig. S2 in ESI).

The RS spectra of Fig. 2a and b have notable similarities, as both are dominated by narrow peaks at comparable frequencies, especially at high frequencies (note that the absolute frequencies of the different modes are slightly different in both RS spectra). The largest difference is observed between the low-frequency A-type modes near  $79\text{ cm}^{-1}$  (Fig. 2a) and  $66\text{ cm}^{-1}$  (Fig. 2b). The similar high-frequency and different low-frequency modes clearly indicate that there must be at least two different polytypes of GaGeTe in as-grown samples. In fact, the possible existence of GaGeTe polytypism is no surprise since this compound is a vdW material of GaSe-type and several polytypes of GaSe, InSe, and GaS, generated by different piling sequences of the same layers along the hexagonal c axis, are known [50,51].

In order to verify which of the two RS spectra really correspond to  $\alpha$ -GaGeTe, we have performed theoretical first-principles simulations of the lattice dynamics of  $\alpha$ -GaGeTe. According to group theory,  $\alpha$ -GaGeTe with trigonal  $R\bar{3}m$  structure and 3 atoms per unit cell located at  $6c$  Wyckoff sites must exhibit 18 vibrational modes at the BZ center,  $\Gamma$ , corresponding to 10 optical modes (6 Raman-active modes,  $3 A_{1g} + 3 E_g$ , 4 infrared (IR)-active modes,  $2 A_{2u} + 2 E_u$ ), and 3 acoustic modes,  $A_{2u} + E_u$  [52]. The ten optical vibrational modes at the BZ center will be noted hereafter with a superindex in order of increasing frequency (Table 1). The four lowest modes at  $\Gamma$ , corresponding to  $E_g^1$ ,  $E_u^1$ ,  $A_{1g}^1$ , and  $A_{2u}^1$  modes in order of increasing frequency, correspond to shear (or transversal, E) and longitudinal (A) vibrations between neighbor Ge and GaTe sublayers that can be both intra-layer and inter-layer (see further details in Figs. S3 and S4 in ESI). On the other hand, the modes at higher frequencies ( $E_g^2$ ,  $E_u^2$ ,  $A_{1g}^2$ ,  $A_{2u}^2$ ,  $E_g^3$ ,  $A_{1g}^3$ ) correspond to Ga–Te, Ga–Ge, and Ge–Ge intra-layer vibrations (see further details in Figs. S5, S6 and S7 in ESI). For completeness, the phonon dispersion curves and the total and partial (atom projected) one-phonon density of states of  $\alpha$ -GaGeTe are given in Fig. S8 in ESI. As expected, the phonon dispersion curves of  $\alpha$ -GaGeTe show that the  $R\bar{3}m$  structure is dynamically stable at room conditions since there are no imaginary frequencies along the BZ.

Notably, the number and frequencies of the Raman-active modes of  $\alpha$ -GaGeTe are in better agreement with RS spectra of Fig. 2a than with those of Fig. 2b (see also Table 1 for a comparison of the theoretical frequencies of  $\alpha$ -GaGeTe and the experimental frequencies in Fig. 2a and in Ref. [8]). Moreover, the theoretically simulated RS spectrum of  $\alpha$ -GaGeTe at room conditions (Fig. S9) is similar to that of Fig. 2a. This result is consistent with the dominance of the RS spectra of Fig. 2a in as-grown samples that mainly correspond to the  $R\bar{3}m$  structure, as identified by the Rietveld refinement of powder XRD measurements performed in the as-



**Fig. 3.** Experimental (black line) XRD patterns of as-grown GaGeTe sample with (a) the  $R\bar{3}m$  structure of  $\alpha$ -GaGeTe and (b) the  $R\bar{3}m$  and  $P6_3mc$  structures of  $\alpha$ -GaGeTe and  $\beta$ -GaGeTe, respectively. The Rietveld refinement fit (red lines) as well as the residuals of the refinements (blue lines) are also shown. (For interpretation of the references to colour in this figure legend, the reader is referred to the Web version of this article.)

grown samples at room conditions (see Fig. 3a and Table 2). Note that our experimental and theoretical structural values for the  $R\bar{3}m$  phase compare nicely with those already reported [10,11,18,19]. Consequently, we can safely attribute the RS spectra of Fig. 2a to  $\alpha$ -GaGeTe with  $R\bar{3}m$  structure and conclude that the RS spectra

**Table 1**

Experimental (ex.) and theoretical (th.) Raman-active (gerade, g) and infrared-active (ungerade, u) frequencies,  $\omega$ , at ambient conditions for  $\alpha$ -GaGeTe. The relative differences between experimental and theoretical frequencies,  $R_{\omega}$ , are shown. Experimental data from Ref. 14 and relative differences with respect to our experimental values are also included for comparison.

Mode	$\omega$ (th.) <sup>a</sup> ( $\text{cm}^{-1}$ )	$\omega$ (th.) <sup>b</sup> ( $\text{cm}^{-1}$ )	$\omega$ (ex.) ( $\text{cm}^{-1}$ )	$R_{\omega}$ <sup>a</sup> (%)	$R_{\omega}$ <sup>b</sup> (%)	$\omega$ <sup>c</sup> ( $\text{cm}^{-1}$ )	$R_{\omega}$ <sup>c</sup> (%)
$E_{1g}^1$	40.1	39.4	41(1)	2.2	3.9	–	–
$E_{1u}^1$	52.5	52.7					
$A_{1g}^1$	76.1	76.9	78(1)	2.4	1.4	64	18
$A_{2u}^1$	138.6	136.7					
$E_{2g}^2$	177.0	172.6	177(2)	0.0	2.5	177	0
$E_{2u}^2$	177.1	173.1					
$A_{2g}^2$	197.9	197.1	205(2)	3.5	3.9	166	19
$A_{2u}^2$	267.3	263.5	266(1)	0.5	0.9	263	1
$E_{3g}^3$	276.0	268.1	279(3)	1.1	3.9	284	2
$A_{1g}^3$	282.6	282.1	296(1)	4.5	4.7	295	0.3

<sup>a</sup> PBEsol.

<sup>b</sup> PBE-D3.

<sup>c</sup> Ref. [14].

**Table 2**

Experimental (theoretical PBEsol) atomic coordinates of the  $R\bar{3}m$  (s.g. No. 166) structure of  $\alpha$ -GaGeTe as obtained from Rietveld refinement. The experimental (theoretical PBEsol) [theoretical PBE-D3] lattice parameters of the hexagonal unit cell are  $a = 4.0480 \text{ \AA}$  (4.0495 \AA) [4.1026 \AA],  $b = 4.0480 \text{ \AA}$  (4.0495 \AA) [4.1026 \AA],  $c = 34.7340 \text{ \AA}$  (34.4336 \AA) [34.7826 \AA], and  $V_0 = 492.8800 \text{ \AA}^3$  (489.0000 \AA<sup>3</sup>) [506.9999 \AA<sup>3</sup>]. Experimental Rietveld R-factors are:  $R_p = 7.27$ ,  $R_{wp} = 5.24$ ,  $R_{exp} = 9.81$ ,  $\chi^2 = 1.873$ .

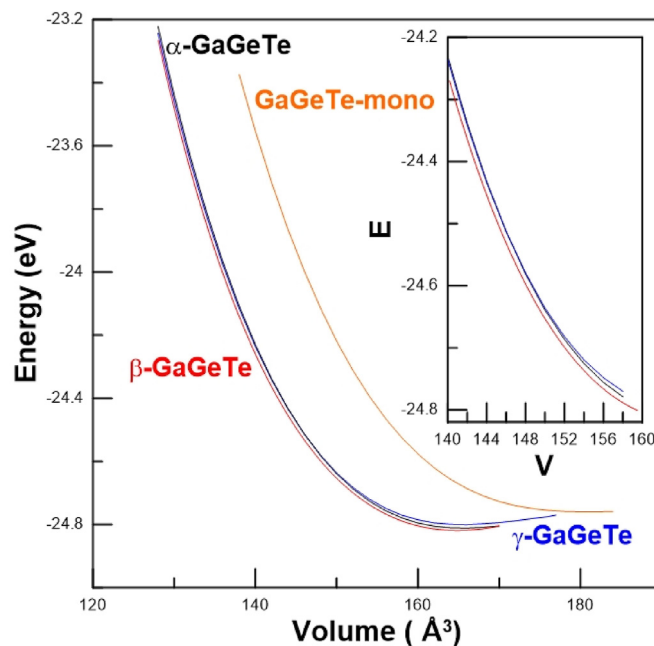
Atom	Wyckoff site	x	y	z
Ga	6c	0	0	0.2550 (0.2513)
Ge	6c	0	0	0.3224 (0.3218)
Te	6c	0	0	0.1173 (0.1188)

reported in Fig. 2b and in Ref. [14] must correspond to a different polytype of GaGeTe.

For completeness, we provide in Table 1 the different symmetries and wavenumbers of the experimentally observed modes of bulk  $\alpha$ -GaGeTe in Fig. 2a, as obtained from polarized RS measurements and analyzed on the basis of theoretical *ab initio* calculations. The A or E symmetry of the different Raman-active modes in Fig. 2a has been determined thanks to polarized measurements with both exciting lasers, since A modes are excluded in rhombohedral and hexagonal layered materials in RS measurements performed in backscattering configuration for cross polarization. When excited with the red laser, the unpolarized RS spectrum of bulk  $\alpha$ -GaGeTe is dominated by the mode near  $280 \text{ cm}^{-1}$  ( $E_g^3$  mode). Additionally, two narrow bands at  $41 \text{ cm}^{-1}$  ( $E_g^1$  mode) and  $79 \text{ cm}^{-1}$  ( $A_{1g}^1$  mode) and two broad bands around  $266 \text{ cm}^{-1}$  ( $A_{2u}^2$  mode) and  $296 \text{ cm}^{-1}$  ( $A_{1g}^3$  mode) are observed. Finally, a number of broad bands located near the expected positions for the two mid-frequency ( $E_g^2$  and  $A_{1g}^2$ ) modes are observed. When excited with the green laser, the unpolarized RS spectrum is clearly dominated by the  $A_g^1$  mode. Additionally, four narrow bands are observed: the  $E_g^3$  and  $A_{1g}^3$  modes and two additional bands at  $177$  and  $206 \text{ cm}^{-1}$  that we have attributed to the  $E_g^2$  and  $A_{1g}^2$  modes. These two last modes were not observed under non-resonant excitation conditions (we will comment later on this subject). Unfortunately, the low-frequency  $E_g^1$  mode could not be observed under green excitation, likely due to both its weak signal and the overlap with the strong Rayleigh scattering (it could not be efficiently eliminated by our edge filter for the green laser).

Once clarified the actual RS spectrum of bulk  $\alpha$ -GaGeTe, the next question is: Which is the polytype that shows the RS spectra of Fig. 2b and Ref. [14]? To answer that question, a joint effort of symmetry arguments and structural search [46,47] has been undertaken. We will show that, since  $\alpha$ -GaGeTe is a complex polytype with three monolayers stacked along the  $c$  axis, like  $\gamma$ -InSe and  $\gamma$ -GaSe [50,51], the answer is given by looking for possible polytypes of GaGeTe with one or two monolayers of GaGeTe stacked along the hexagonal  $c$  axis.

The simplest polytype one can consider (hereafter named GaGeTe-mono) is composed of  $\alpha$ -GaGeTe monolayers piled on top of each other; i.e. without the shift of neighbor layers along the hexagonal  $a$ - $b$  plane observed in  $\alpha$ -GaGeTe (Fig. 1(left) and Fig. S1(left)). This polytype belongs to s.g.  $P\bar{3}m1$  and contains only one monolayer of GaGeTe along the hexagonal  $c$  axis (see Fig. S10 in ESI). *Ab initio* simulations of the vibrational properties of this polytype, whose structure is summarized in Table S1 in ESI, show that its vibrational modes are similar to those of  $\alpha$ -GaGeTe; i.e. 18 vibrational modes at  $\Gamma$  corresponding to 10 optical modes (6 Raman-active modes, 3  $A_{1g} + 3 E_g$ , 4 infrared (IR)-active modes, 2  $A_{2u} + 2 E_u$ ) and 3 acoustic modes,  $A_{2u} + E_u$  [52]. Additionally, the frequencies of this polytype are very similar to those of  $\alpha$ -GaGeTe (see Table S2); however, our calculations show that this polytype is dynamically unstable since it has imaginary frequencies along the



**Fig. 4.** Theoretical total energy vs volume for the different polytypes of GaGeTe.  $\alpha$ -GaGeTe (s.g.  $R\bar{3}m$ ),  $\beta$ -GaGeTe (s.g.  $P6_3mc$ ),  $\gamma$ -GaGeTe (s.g.  $P\bar{3}m1$ ), and GaGeTe-mono (s.g.  $P\bar{3}m1$ ).

BZ (see Fig. S10). Moreover, this polytype is not energetically competitive with respect to  $\alpha$ -GaGeTe as seen in Fig. 4. These theoretical results are expected since this polytype shows a very low packing efficiency of the layers along the hexagonal  $c$  axis that gives rise to very strong repulsion forces between Te atoms. These forces, caused by the repulsion of the lone electron pairs in Te atoms, are very strong because Te atoms of adjacent layers are on top of Te atoms of the neighbor layer. This atomic disposition is in contrast to that found in  $\alpha$ -GaGeTe, in which the different layers are well packed along the  $c$  axis due to the shift of the layers along the  $a$ - $b$  plane. It can be seen that short and long Ga-Te bonds viewed in Fig. 1(left) and Fig. S1(left) form a zigzag structure and there is a coupling of the zigzag structure of neighbor layers, thus reducing the repulsion between close Te atoms in neighbor layers.

Two additional polytypes of GaGeTe have been found to be relevant for this study. One of them, hereafter named  $\gamma$ -GaGeTe, is also a polytype containing one layer along the hexagonal  $c$  axis and with s.g.  $P\bar{3}m1$  (see Fig. 1(right) and Fig. S1(right)). This polytype is formed by monolayers that are different from those observed in  $\alpha$ -GaGeTe. The monolayers of  $\gamma$ -GaGeTe show a  $180^\circ$  rotated germanene sublayer with respect to the monolayers of  $\alpha$ -GaGeTe. Consequently, top and bottom Te atoms in the  $\gamma$ -GaGeTe monolayer are not aligned along the hexagonal  $c$  axis. This arrangement of top and bottom Te atoms in the  $\gamma$ -GaGeTe monolayer allows an efficient zig-zag packing of neighbor layers in bulk  $\gamma$ -GaGeTe, similar to bulk  $\alpha$ -GaGeTe, but with the hexagonal  $c$  axis containing only one monolayer instead of the three found in bulk  $\alpha$ -GaGeTe. As expected, bulk  $\gamma$ -GaGeTe is energetically competitive with bulk  $\alpha$ -GaGeTe (see Fig. 4). Moreover, bulk  $\gamma$ -GaGeTe is dynamically stable at room conditions according to the theoretical phonon dispersion curves and one-phonon density of states of bulk  $\gamma$ -GaGeTe at room conditions (Fig. S11). Therefore, we can conclude that this polytype might be observed in as-grown GaGeTe samples at room conditions.

For the sake of comparison with experimental measurements, we provide the theoretical structural and vibrational parameters of

bulk  $\gamma$ -GaGeTe at 0 GPa and 0 K in Tables S3 and S4, respectively. *Ab initio* simulations suggest that bulk  $\gamma$ -GaGeTe has similar vibrational modes to those of bulk  $\alpha$ -GaGeTe; i.e. 18 vibrational modes at the BZ center corresponding to 10 optical modes (6 Raman-active modes, 3  $A_{1g}$  + 3  $E_g$ , 4 infrared (IR)-active modes, 2  $A_{2u}$  + 2  $E_u$ ) and 3 acoustic modes,  $A_{2u}$  +  $E_u$  [52]. As observed in Table S4, the Raman- and IR-active frequencies are very similar to those of bulk  $\alpha$ -GaGeTe; therefore, this polytype is not able to explain the RS spectra of Fig. 2b. On the other hand, we must note that this polytype could explain the RS spectra of Fig. 2a; however, the simulation of the unpolarized non-resonant RS spectrum of bulk  $\gamma$ -GaGeTe (Fig. S9) is completely different to that of bulk  $\alpha$ -GaGeTe. In bulk  $\gamma$ -GaGeTe, the RS spectrum is dominated by A-type modes, while in bulk  $\alpha$ -GaGeTe it is dominated by E-type modes. Therefore, non-resonant RS spectra of Fig. 2a are consistent with bulk  $\alpha$ -GaGeTe and not with bulk  $\gamma$ -GaGeTe. Moreover, both polytypes can be distinguished by XRD measurements. In fact, we could not do a Rietveld refinement of the XRD patterns of the majority phase with the  $\gamma$ -GaGeTe structure since neither the number nor the intensity of the peaks match. Consequently, we can exclude that either RS spectra of Fig. 2a or of Fig. 2b correspond to  $\gamma$ -GaGeTe. At present, we have not found this polytype in as-grown GaGeTe samples.

The other possible polytype that we have considered contains two layers along the hexagonal  $c$  axis (see Fig. 1(center) and Fig. S1(center)) and has a non-centrosymmetric structure (s.g.  $P6_3mc$ , No. 186). This polytype (hereafter named  $\beta$ -GaGeTe) is formed by monolayers identical to those of  $\alpha$ -GaGeTe; however, the second monolayer along the  $c$  axis is the specular image of the monolayer of  $\alpha$ -GaGeTe slightly shifted along the  $a$ - $b$  plane. In this arrangement, the packing of the two monolayers in the hexagonal unit cell is not perfect because the zig-zag sequence of the neighbor layers is not the same, but the repulsion between the monolayers is relatively weak because Te atoms of adjacent layers are not aligned along the  $c$  axis. As expected,  $\beta$ -GaGeTe is energetically competitive with  $\alpha$ -GaGeTe and  $\gamma$ -GaGeTe at room conditions (see Fig. 4). Moreover,  $\beta$ -GaGeTe is dynamically stable at room conditions, according to the theoretical phonon dispersion curves and one-phonon density of states of  $\beta$ -GaGeTe at room conditions (Fig. S12). Therefore, we conclude that this polytype might also be observed in as-grown GaGeTe samples.

Again, for the sake of comparison with experimental measurements, we provide the theoretical vibrational frequencies and

**Table 4**

Experimental (theoretical PBEsol) atomic coordinates of the  $P6_3mc$  (s.g. No. 186) structure of  $\beta$ -GaGeTe. The experimental (theoretical PBEsol) [theoretical PBE-D3] lattice parameters of the hexagonal unit cell are  $a = 4.0379$  Å (4.0451 Å) [4.0940 Å],  $b = 4.0379$  Å (4.0451 Å) [4.0940 Å],  $c = 22.1856$  Å (23.0047 Å) [23.1474 Å], and  $V_0 = 313.2658$  Å<sup>3</sup> (326.0046 Å<sup>3</sup>) [335.9999 Å<sup>3</sup>]. Conventional Rietveld R-factors are:  $R_p = 9.72$ ,  $R_{wp} = 7.84$ ,  $R_{exp} = 3.76$ ,  $\chi^2 = 2.087$ .

atom	Wyckoff site	x	y	z
Ga1	2a	0	0	0.1270 (0.1271)
Ga2	2b	1/3	2/3	0.3729 (0.3729)
Ge1	2a	0	0	0.2327 (0.2327)
Ge2	2b	1/3	2/3	0.2672 (0.2673)
Te1	2b	1/3	2/3	0.5727 (0.5720)
Te2	2b	1/3	2/3	0.9274 (0.9281)

structural parameters of bulk  $\beta$ -GaGeTe at 0 GPa and 0 K in Tables 3 and 4, respectively. *Ab initio* simulations of the vibrational properties of bulk  $\beta$ -GaGeTe show that its vibrational modes are completely different to those of bulk  $\alpha$ -GaGeTe. Group theoretical considerations of the  $P6_3mc$  structure, with 2 atoms in 2a Wyckoff sites and 4 atoms in 2b sites, yield 36 normal modes of vibration at  $\Gamma$ , whose mechanical decomposition is [52]:  $\Gamma_{36} = 5 A_1(R,IR) + 6 B_1(S) + 5 E_1(R,IR) + 6 E_2(R) + A_1(ac) + E_1(ac)$ , where R, IR, S, and ac correspond to Raman-active, IR-active, silent, and acoustic modes, respectively. Therefore, there are a total of 16 Raman-active modes that can be up to 26 if we consider the TO-LO splitting of polar  $A_1$  and  $E_1$  modes that are both Raman and IR-active. The atomic vibrations of all the Raman- and IR-active modes of bulk  $\beta$ -GaGeTe have been plotted in Figs. S13 to S23 in ESI. We have to note that most of the vibrational modes of bulk  $\beta$ -GaGeTe are related to bulk  $\alpha$ -GaGeTe. In fact, there is a double number of vibrational modes in bulk  $\beta$ -GaGeTe than in bulk  $\alpha$ -GaGeTe due to the double number of atoms in the primitive unit cell. In this way, the modes of bulk  $\beta$ -GaGeTe come in pairs that have their single parent vibrational mode in bulk  $\alpha$ -GaGeTe.

Before commenting on the vibrational modes of bulk  $\beta$ -GaGeTe appearing in the RS spectra of Fig. 2b, we want to stress that these RS spectra exhibit two broad bands around 127 and 143  $\text{cm}^{-1}$  that were also reported by López-Cruz et al. [14]. Those authors suggested that the two bands could be attributed to the second-order scattering of bulk  $\alpha$ -GaGeTe, but they also commented that this hypothesis was not confirmed by their temperature-dependent measurements. It has been recently demonstrated that these two

**Table 3**

Experimental (ex.) and theoretical (th.) Raman- and infrared-active frequencies,  $\omega$ , at ambient conditions for  $\beta$ -GaGeTe. The relative differences between experimental and theoretical frequencies,  $R_o$ , are shown. Experimental data from Ref. 14 are also included for comparison.

Mode	$\omega$ (th.) <sup>a</sup> ( $\text{cm}^{-1}$ )	$\omega$ (th.) <sup>b</sup> ( $\text{cm}^{-1}$ )	$\omega$ (ex.) ( $\text{cm}^{-1}$ )	$\omega$ (ex.) <sup>c</sup> ( $\text{cm}^{-1}$ )	$R_o^a$ (%)	$R_o^b$ (%)
$E_2^1$	16.2	17.2				
$E_2^2$	35.6	35.8				
$E_1^1$	39.1	39.2	35(1)	—	11.7	11.8
$E_1^2$	52.5	53.3	59(1)		11.0	9.7
$E_2^3$	53.1	53.9				
$A_1^1$	75.7	77.2	66(1)	64	14.7	17.0
$A_1^2$	139.4	138.0	168(2)	166	17.0	17.8
$E_3^1$	176.3	173.0	177(3)	177	0.2	2.1
$E_2^4$	176.6	173.2	177(3)		0.2	2.1
$E_4^1$	178.4	174.9	182(4)		1.9	3.9
$E_2^5$	178.6	175.1	182(4)		1.9	3.9
$A_1^3$	201.0	199.2	200(4)		0.5	0.4
$A_1^4$	267.9	265.0	263(1)	263	1.8	0.8
$E_1^5$	274.6	267.9	285(1)	284	3.6	6.0
$E_2^6$	274.7	268.0	285(1)		3.6	6.0
$A_1^5$	285.6	283.8	295(1)	295	3.2	3.8

<sup>a</sup> PBEsol.<sup>b</sup> PBE-D3.<sup>c</sup> Ref. 14.

broad bands, appearing in the RS spectrum of many tellurides (including GaGeTe), correspond to the two most intense Raman-active modes of trigonal Te [53]. This element has three main Raman-active modes (one  $A_1$  and two E modes). The Raman-active modes of Te appear in a number of tellurides because of the formation of nano- or micro-clusters of Te that occur as-grown samples or are induced by sample degradation [53,54]. The RS spectrum of some regions of GaGeTe samples only show these two broad modes, as already reported [53], thus suggesting that there are regions of as-grown GaGeTe samples with segregated nano- or micro-clusters of Te. Further information regarding the Raman modes of Te precipitates in a number of tellurides can be found in Ref. [53]. It is important to comment that in Ref.[53] it was assumed that the normal RS spectrum of bulk  $\alpha$ -GaGeTe was the one reported by López-Cruz et al. because at that time the existence of different polytypes of GaGeTe was not taken into account. In this work we take an opposite view, inferring the existence of different GaGeTe polytypes from experimental measurements and theoretical considerations.

Now that we have clarified the Te-related origin of some bands appearing in Fig. 2b and also in the RS spectra reported in Ref. [14], we can comment on the rest of the modes present in Fig. 2b that we will show that correspond to bulk  $\beta$ -GaGeTe. In this context, the number and frequencies of the Raman-active modes observed in the RS spectra of Fig. 2b show a good agreement with the theoretically predicted transversal optic (TO) modes of bulk  $\beta$ -GaGeTe (see bottom marks in Fig. 2b and Table 3). Since no experimental LO mode seems to be observed, we have not performed theoretical calculations of longitudinal optic (LO) modes. The lack of observation of LO modes suggests a very small LO-TO splitting and a very small ionicity of this compound. Unfortunately, we have not been able to theoretically simulate the RS spectrum of  $\beta$ -GaGeTe at room conditions and compare it to experimental data [55].

Similarly to  $\alpha$ -GaGeTe, the A or E symmetry of the different Raman-active modes of  $\beta$ -GaGeTe has been determined thanks to polarized measurements with both exciting lasers (Fig. 2b) and our results are coincident to those reported in Ref.[14]. As shown in Fig. 2b and Table 3, most observed E-type modes seem to be  $E_1$  (TO) modes, while  $E_2$  modes are either not observed (some  $E_1$  and  $E_2$  modes are almost coincident in frequency and may overlap) or are very weak ( $E_2$  modes of very small frequency are not observed and only the  $E_2^2$  mode seems to have been observed under resonance conditions close to the  $E_1^1$  mode). Therefore, we can conclude that the RS spectra of Fig. 2b and of Ref.[14] can be explained as the vibrational modes of bulk  $\beta$ -GaGeTe. Importantly, the assignment of the Raman modes of Fig. 2b to bulk  $\beta$ -GaGeTe allows us to explain the extra modes in Fig. 2b with respect to  $\alpha$ -GaGeTe as being due to Raman-active modes and not to IR-active modes of  $\alpha$ -GaGeTe as assumed in Ref.[14]. Note that a number of Raman-active modes of bulk  $\beta$ -GaGeTe come from IR-active modes of bulk  $\alpha$ -GaGeTe since bulk  $\beta$ -GaGeTe is a non-centrosymmetric structure with double number of vibrational modes at  $\Gamma$  than bulk  $\alpha$ -GaGeTe, as already commented.

Our claim for the new polytype  $\beta$ -GaGeTe as being responsible for the RS spectra of Fig. 2b is confirmed by powder XRD measurements performed in as-grown samples at room conditions. In some samples, we have measured XRD patterns showing only peaks of bulk  $\alpha$ -GaGeTe (see Fig. 3a); however, in other samples, we have measured XRD patterns with additional peaks (see Fig. 3b). The XRD patterns with additional peaks can be very well explained assuming the coexistence of  $\alpha$ -GaGeTe and  $\beta$ -GaGeTe. In particular, according to peak intensities, Fig. 3b corresponds to a mixture of 70%  $\alpha$ -GaGeTe and 30%  $\beta$ -GaGeTe. The experimental structural parameters of bulk  $\beta$ -GaGeTe obtained by the Rietveld refinement of XRD patterns in Fig. 3b are given in Table 4 and show a good

agreement with our theoretical data.

It must be stressed that despite most modes of bulk  $\beta$ -GaGeTe are similar in frequency, intensity, and polarization to those of bulk  $\alpha$ -GaGeTe, they are shifted in frequency, as already pointed out. This is consistent with what could be expected for a polytype whose main difference is likely a change in the piling of the layers along the hexagonal  $c$  axis. In particular, it can be observed that the low-frequency (high-frequency) modes of bulk  $\beta$ -GaGeTe are shifted to low (high) values with respect to bulk  $\alpha$ -GaGeTe. The smaller frequencies in the low-frequency region in bulk  $\beta$ -GaGeTe are indicative of a smaller interlayer interaction in this polytype than in bulk  $\alpha$ -GaGeTe. This result is consistent with the higher repulsion between adjacent Te atoms in bulk  $\beta$ -GaGeTe than in bulk  $\alpha$ -GaGeTe. A similar result has been already found in GaSe polytypes [51].

We comment now in detail the RS spectrum of bulk  $\beta$ -GaGeTe (Fig. 2b) on the light of the theoretical frequencies summarized in Table 3. When excited with the red laser, this RS spectrum is dominated by a band near  $286\text{ cm}^{-1}$  accompanied by two weak peaks at both sides of the main band at  $263$  and  $297\text{ cm}^{-1}$ , as in bulk  $\alpha$ -GaGeTe. These three modes correspond to the  $E_1^3$ ,  $A_1^4$ , and  $A_1^5$  modes of bulk  $\beta$ -GaGeTe, respectively. Three additional narrow bands are also observed at  $35$ ,  $59$ , and  $66\text{ cm}^{-1}$ , corresponding to the  $E_1^1$ ,  $E_2^1$ , and  $A_1^1$  modes of bulk  $\beta$ -GaGeTe, respectively. We have to stress that the two lowest-frequency modes (below  $64\text{ cm}^{-1}$ ) of bulk  $\beta$ -GaGeTe in Fig. 2b were not previously reported because of the strong Rayleigh scattering in Ref.[14]. In addition, there are two mid-frequency modes between  $170$  and  $210\text{ cm}^{-1}$ ; i.e. in the region where some modes of bulk  $\beta$ -GaGeTe are also expected. These modes are poorly observed when excited with the red laser, with only one narrow peak around  $167\text{ cm}^{-1}$  being well observed. This mode has been tentatively attributed to the  $A_1^2$  mode, despite its theoretically predicted frequency in bulk  $\beta$ -GaGeTe is much smaller (ca.  $139\text{ cm}^{-1}$ ).

A RS spectrum of bulk  $\beta$ -GaGeTe similar to that reported by López-Cruz et al. [14] was obtained under resonant conditions with the green laser. In this case, the RS spectrum is dominated by very strong modes near  $66\text{ cm}^{-1}$  ( $A_1^1$  mode) and  $263$ ,  $286$ , and  $297\text{ cm}^{-1}$  ( $A_1^4$ ,  $E_1^3$ , and  $A_1^5$  modes). Additionally, two narrow lines near  $167$  and  $180\text{ cm}^{-1}$  were found in the mid-frequency region. We have tentatively attributed these two lines to the  $A_1^2$  and  $E_1^1$  modes of bulk  $\beta$ -GaGeTe. We must also note that broad bands are observed between  $180$  and  $215\text{ cm}^{-1}$  in bulk  $\beta$ -GaGeTe both under resonant and non-resonant conditions, so we speculate that these broad bands could be related to the mid-frequency  $E_1^4$  and  $A_1^3$  modes of bulk  $\beta$ -GaGeTe; i.e. at similar frequencies to those in bulk  $\alpha$ -GaGeTe under resonant conditions.

Once that most of the vibrational modes found in Fig. 2a and Fig. 2b have been explained, we want to comment on the absence of certain modes in the RS spectra of both polytypes. It is noteworthy that we have not clearly detected the mid-frequency  $A_{1g}^2$  and  $E_g^2$  modes in bulk  $\alpha$ -GaGeTe nor the mid-frequency  $A_1^3$  and  $E_1^4$  modes in bulk  $\beta$ -GaGeTe when measuring under non-resonant excitation conditions, but that  $A_{1g}^2$  and  $E_g^2$  modes in bulk  $\alpha$ -GaGeTe have been measured under resonant excitation conditions. More specifically, very broad bands with different maxima have been measured in the mid-frequency region of bulk  $\alpha$ -GaGeTe when measurements have been performed under non-resonant excitation conditions, while two narrow peaks were observed in that region when measurements have been performed under resonant excitation conditions.

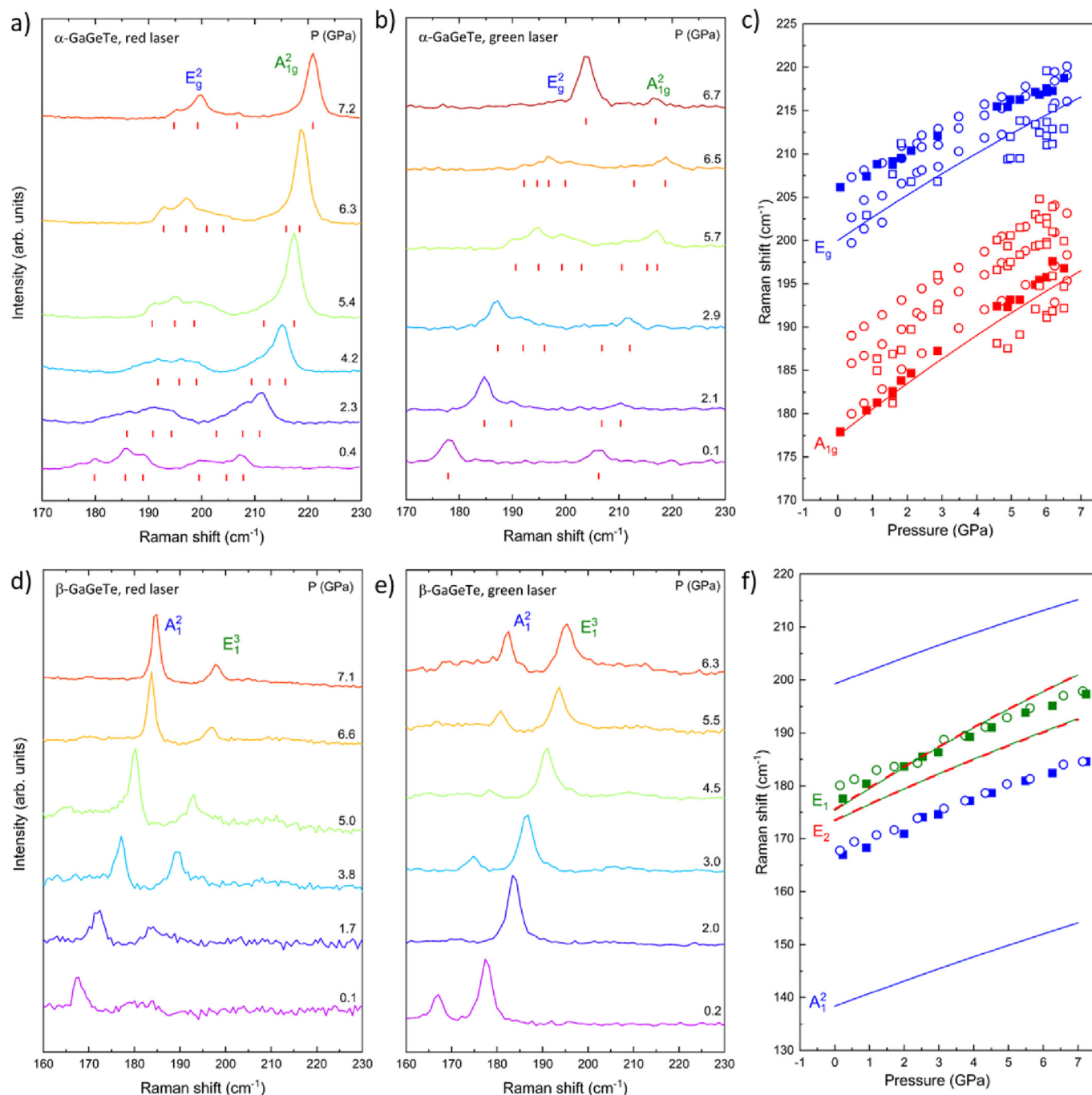
Here we will show that the poor observation of the two mid-frequency Raman-active modes either in bulk  $\alpha$ -GaGeTe ( $E_g^2$  and  $A_{1g}^2$  modes) or in bulk  $\beta$ -GaGeTe ( $E_1^4$  and  $A_1^3$  modes) under non-resonant excitation conditions is likely due to the existence of a Fermi resonance in bulk  $\alpha$ -GaGeTe and to a strong anharmonic



decay in bulk  $\beta$ -GaGeTe, respectively. To verify these mechanisms, we have followed the evolution of the two mid-frequency Raman-active modes of bulk  $\alpha$ -GaGeTe and  $\beta$ -GaGeTe as a function of pressure when excited with the red and green lasers; i.e. under non-resonant and resonant excitation conditions, respectively (see Fig. 5).

In bulk  $\alpha$ -GaGeTe, the two broad bands of the mid-frequency

region can be followed under pressure when excited with the red laser (Fig. 5a). Above 5 GPa, a narrow band near  $240\text{ cm}^{-1}$  is observed, while a second narrow band can be observed at much higher pressures (above 8 GPa). On the other hand, the two narrow peaks in the mid-frequency region are observed when excited with the green laser at room pressure (Fig. 5b) and are nicely followed up to 2 GPa. Above this pressure, both peaks develop into intense



**Fig. 5.** Detail of the effect of pressure on the RS spectra of  $\alpha$ -GaGeTe in the mid-frequency region (of the  $E_g^2$  and  $A_{1g}^2$  modes) excited with the red laser (a) and the green laser (b). Idem on the RS spectra of  $\beta$ -GaGeTe in the mid-frequency region (of the  $A_1^2$ ,  $E_1^3$ ,  $E_1^1$ , and  $A_1^3$  modes) excited with the red laser (d) and the green laser (e). Experimental (symbols) and theoretical (lines) pressure dependence of the mid-frequency Raman-active modes in bulk  $\alpha$ -GaGeTe (c) and bulk  $\beta$ -GaGeTe (f). Circles and squares correspond to experimental data obtained with the red and green lasers, respectively. Filled symbols in (c) correspond to experimental data of the main Raman-active modes measured with the green laser under resonant excitation at low pressures and under weak Fermi resonance at high pressures. Open symbols in (c) correspond to experimental data of weak relative maxima of the broad bands under Fermi resonance (see red marks in (a) and (b)). (For interpretation of the references to colour in this figure legend, the reader is referred to the Web version of this article.)

broad peaks with adjacent bands and even into weak broad bands similar to those observed under non-resonant excitation conditions. In particular, the RS spectra of bulk  $\alpha$ -GaGeTe around 5.5 GPa and excited with both the red and green lasers look very similar. This result indicates that resonant excitation conditions for RS measurements near room pressure with the green laser are no longer maintained above 2 GPa due to the shift of electronic levels with pressure. On increasing pressure and above 6 GPa, two narrow bands are observed in the RS spectra excited with the green laser in a similar way as in the RS spectra excited with the red laser. Since the pressure dependence of the experimental frequencies of the two modes measured with the green laser agrees with the theoretically expected behavior (Fig. 5c), it can be safely concluded that the bands observed at different pressures in this frequency range are clearly related to the  $E_g^2$  and  $A_{1g}^2$  modes [56].

Now we will give an explanation of the features mentioned above in the mid-frequency region of the RS spectra in bulk  $\alpha$ -GaGeTe. It is well known that strong broadening of vibrational modes can occur due to anharmonic processes involving the decay of modes into sums and differences of two or more phonons, as evidenced in ZnO [57] and CuI [58]; however, the strong distortion of the two  $E_g^2$  and  $A_{1g}^2$  modes near  $200\text{ cm}^{-1}$  in bulk  $\alpha$ -GaGeTe at room pressure that shows broad bands with several relative maxima at low pressures and the development of two clear narrow modes above 5 GPa is consistent with the observation of a Fermi resonance at low pressures and the disappearance of the resonance at high pressures. Notably, similar pressure-induced de-activation of the Fermi resonance has been observed in several compounds, such as GaP, CuCl, CuBr, and CuI, and more recently SnSb<sub>2</sub>Te<sub>4</sub> [58–70]. It must also be noted that the reverse process; i.e. pressure-induced activation of Fermi resonance, can lead to observation of Fermi resonance not present at room conditions, like in ice VII [71].

The Fermi resonance is a very interesting phenomenon observed in Raman and IR spectroscopy, firstly observed in CO<sub>2</sub> in 1929 [72] and explained by Enrico Fermi in 1931 [73]. This phenomenon is very common in molecules and molecular crystals and it has been also observed in several crystalline solids, including graphene [74]. The simplest case occurs when the double excitation (first overtone) of a first-order phonon with frequency  $\omega_1$  matches the energy of a second first-order phonon with frequency  $\omega_2$  ( $\omega_2 \approx 2\omega_1$ ). If both excitations have the same symmetry, they can mix or couple, thus originating an anharmonic decay of the second first-order phonon. As a consequence, two coupled excitations,  $\omega_+$  and  $\omega_-$  with different energies than those of the original coupled modes can be observed in the vibrational spectra. In general, the second first-order phonon loses its intensity, and the first overtone, usually of much smaller intensity than first-order phonons, can be partially observed since the intensity of both original modes is conserved [75]. The most complex case, typical of solids, consists of first-order modes that interact with a continuum of states that usually has a very high two-phonon (sum or difference) DOS (also known as the joint phonon DOS). The strong decay processes of the first-order phonon that is in resonance with an intense joint DOS leads to a change in frequency (renormalization of the phonon frequency), intensity, and width of the first-order phonon leading to the appearance of a three-mode aspect as that shown by the two bands in  $\alpha$ -GaGeTe at low pressures. As already mentioned, a similar phenomenon was earlier described in GaP, CuCl, CuBr, CuI, and also studied with increasing pressure in GaP, CuCl, CuBr, CuI, and SnSb<sub>2</sub>Te<sub>4</sub> [58–70].

Similarly to the cases of CuCl and CuBr [66–69], the two broad bands with different maxima present in the mid-frequency region of bulk  $\alpha$ -GaGeTe are caused by a Fermi resonance that disappears with increasing pressure above 8.5 GPa. The disappearance of the

Fermi resonance with increasing pressure is due to the stronger blueshift of the bare  $E_g^2$  and  $A_{1g}^2$  phonon frequencies with pressure than that of the two-phonon density of states resonating with them. It can be observed that the Fermi resonance in the RS spectra excited with the red laser disappears above 5.4 GPa for the high-frequency  $A_{1g}^2$  mode, while for the  $E_g^2$  mode it disappears at higher pressure. Surprisingly, two narrow bands corresponding to the experimental  $E_g^2$  and  $A_{1g}^2$  phonons are observed between room pressure and 2 GPa when excited with the green laser; i.e. Fermi resonance is not observed under resonant excitation conditions. Above 2 GPa, resonant excitation with the green laser disappears and RS spectra of higher pressure show the Fermi resonance as in the case of non-resonant excitation. We have to note that this phenomenon has not been observed at least in solids, to our knowledge, even in GaP, the most studied inorganic solid by means of RS measurements. In this context, we have to stress that GaP has indirect excitonic levels between 2.3 and 2.6 eV and direct excitonic levels around 2.78 eV at 300 K [76,77] and RS measurements in GaP have been extensively performed both under non-resonant and resonant excitation conditions [59–63,65,77–79].

Support for the existence of a Fermi resonance in bulk  $\alpha$ -GaGeTe is given by the comparison of the frequencies of the first-order phonons in this polytype and the bands of the two-phonon DOS (Fig. S24 in ESI) at 0 GPa. In particular, the Fermi resonance of the  $A_{1g}^2(\Gamma)$  phonon can be explained by: i) the almost exact coincidence of the frequency of this mode ( $197.9\text{ cm}^{-1}$ ) with that of the difference of the  $A_{1g}^3(\Gamma)$  and  $A_{1g}^1(\Gamma)$  phonons ( $282.6-76.1\text{ cm}^{-1}$ ) and ii) the strong two-phonon DOS of A-type near  $200\text{ cm}^{-1}$  caused by the strong one-phonon DOS of these last two A modes centered around  $275$  and  $85\text{ cm}^{-1}$ , respectively (see Fig. S8). Note that sum and differences of two of these three modes could also lead to Fermi resonances of  $A_{1g}^1(\Gamma)$  or  $A_{1g}^3(\Gamma)$  phonons; however, these are prevented by the weak one-phonon DOS of the A-type mode between  $195$  and  $215\text{ cm}^{-1}$  (see Fig. S8). On the other hand, the Fermi resonance of the  $E_g^2(\Gamma)$  phonon is not as easy to explain, since the frequency of this mode does not match with the  $E_g^3(\Gamma) - E_g^1(\Gamma)$  difference and phonons of different parts of the BZ must be taken into account. In summary, we conclude that the observation of broad bands in the mid-frequency region of bulk  $\alpha$ -GaGeTe in non-resonant RS measurements at room pressure is consistent with a Fermi resonance effect affecting both  $A_{1g}^2(\Gamma)$  and  $E_g^2(\Gamma)$  phonons and that Fermi resonance is not observed under resonant excitation conditions.

We will now explain the Raman modes observed in the mid-frequency region in bulk  $\beta$ -GaGeTe. Six Raman-active modes ( $A_1^2$ ,  $E_1^3$ ,  $E_2^3$ ,  $E_1^4$ ,  $E_2^4$ ,  $A_1^3$ ) are predicted in this region (Table 3). Leaving aside the two undetected  $E_2$  modes, the  $A_1^2$  and  $E_1^3$  modes are clearly observed and followed under pressure. However, no bands related to the  $E_1^4$  and  $A_1^3$  modes could be followed under pressure excited either with the red laser (Fig. 5d) or the green laser (Fig. 5e), as observed by the pressure dependence of the experimental and theoretical frequencies measured in this mid-frequency region (Fig. 5f). Therefore, taking into account that our RS measurements on bulk  $\beta$ -GaGeTe with the green laser close to room pressure are of resonant type (as proved in Ref.[14]) and in the light of the previous results on bulk  $\alpha$ -GaGeTe for resonant and non-resonant excitation, we tentatively conclude that the lack of both Raman-active  $E_1^4$  and  $A_1^3$  modes in bulk  $\beta$ -GaGeTe cannot be due to a Fermi resonance, despite the two-phonon DOS of bulk  $\beta$ -GaGeTe being very similar to that of bulk  $\alpha$ -GaGeTe (Fig. S24). Instead, we believe that these two modes cannot be detected because of their weak RS cross-section, due to a strong anharmonic decay of these two modes in bulk  $\beta$ -GaGeTe as a consequence of being in a region with a high density of states. We must note that the case of bulk  $\beta$ -GaGeTe compared to bulk  $\alpha$ -GaGeTe is similar to that of zincblende-type CuI

compared to isostructural CuBr and CuCl. While Fermi resonances were observed in CuCl and CuBr [64–69], only a strong anharmonic decay was observed in CuI [58].

#### 4.2. Lattice thermal conductivity of bulk $\alpha$ -GaGeTe and $\beta$ -GaGeTe polytypes

It has been shown in the prototypical Dirac TSM Cd<sub>3</sub>As<sub>2</sub> that the existence of soft optical phonon modes affects the lattice thermal conductivity (which ranges from 0.3 to 0.7 Wm<sup>-1</sup>K<sup>-1</sup> at 300 K) [80]. The low-frequency optical phonon modes increase the available phase space of the phonon-phonon scattering of heat-carrying acoustic phonons. Consequently, this effect will cause low lattice thermal conductivity values for Cd<sub>3</sub>As<sub>2</sub>. Moreover, it has been shown that the interplay between the phonon-phonon Umklapp scattering rates and the soft optical phonon frequency explains the unusual non-monotonic temperature dependence of the lattice thermal conductivity of Cd<sub>3</sub>As<sub>2</sub> [80]. In this scenario, it is important to note that low-frequency optical phonon modes near Z and A are also present in the phonon dispersion curves of bulk  $\alpha$ -GaGeTe (Fig. S8) and bulk  $\beta$ -GaGeTe (Fig. S11), respectively. These points are related to the *c*-axis direction of the hexagonal unit cell; i.e. perpendicular to the GaGeTe monolayers in the trigonal and hexagonal primitive unit cells of  $\alpha$ -GaGeTe and  $\beta$ -GaGeTe, respectively.

Based on the third-order interatomic force constants, we have calculated the lattice thermal conductivity ( $\kappa_L$ ) for bulk  $\alpha$ -GaGeTe and  $\beta$ -GaGeTe as a function of temperature (Fig. 6). Due to the existence of low-frequency phonons it is not surprising to observe that the  $\kappa_L$  of both polytypes along different axes are quite low. At room-temperature,  $\kappa_L$  is 0.135 Wm<sup>-1</sup>K<sup>-1</sup> along the two crystallographic *x* and *y* axes (in-plane), while along the layered *z* axis (out-of-plane),  $\kappa_L$  lowers to 0.007 Wm<sup>-1</sup>K<sup>-1</sup> for bulk  $\alpha$ -GaGeTe. On the other hand,  $\kappa_L$  is 0.109 Wm<sup>-1</sup>K<sup>-1</sup> along the two crystallographic *x* and *y* axes (in-plane), while along the layered *z* axis (out-of-plane),  $\kappa_L$  lowers to 0.006 Wm<sup>-1</sup>K<sup>-1</sup> for bulk  $\beta$ -GaGeTe. These values compare to those just calculated for monolayer  $\alpha$ -GaGeTe and can be compared to those recently reported for other topological materials, such as  $\beta$ -As<sub>2</sub>Te<sub>3</sub> [81]. For the latter, a low-bandgap semiconductor with topological properties, the room-temperature  $\kappa_L$  was calculated to be 0.098 Wm<sup>-1</sup>K<sup>-1</sup> along the two crystallographic *x* and *y* axes (in-plane), while along the layered *z* axis (out-of-plane),  $\kappa_L$  lowers to 0.023 Wm<sup>-1</sup>K<sup>-1</sup> near room conditions. Therefore, we conclude that the thermoconductivity of  $\beta$ -GaGeTe is slightly smaller than that of  $\alpha$ -GaGeTe and that both compounds show even smaller values than in  $\beta$ -As<sub>2</sub>Te<sub>3</sub> along the *z* axis. It is important to stress that calculations in these three materials show smaller values of lattice thermal conductivity than in most interesting thermoelectric compounds [82] and even smaller than those of Sb<sub>2</sub>Te<sub>3</sub> and Bi<sub>2</sub>Te<sub>3</sub>, the most used thermoelectric materials at ambient conditions [83,84].

The ultralow lattice thermal conductivity of both GaGeTe polytypes is not unexpected because it is well known that a low lattice thermal conductivity is usually associated to the low vibrational frequencies of heavy atoms [85]. In this context, the existence of very-low-frequency optical phonon modes is also observed in the phonon dispersion curves of the present calculations for both GaGeTe polytypes. Moreover, it is observed that both GaGeTe polytypes exhibit a monotonic decrease of  $\kappa_L$  upon increasing temperature that follows roughly a T<sup>-1</sup> power law. Such a feature suggests that Umklapp scattering events dominate the thermal transport in this temperature range, as recently observed in  $\beta$ -As<sub>2</sub>Te<sub>3</sub> [81,86,87]. In this sense, it has been also shown that the interplay between the phonon-phonon Umklapp scattering rates and the soft optical phonon frequency explains the unusual

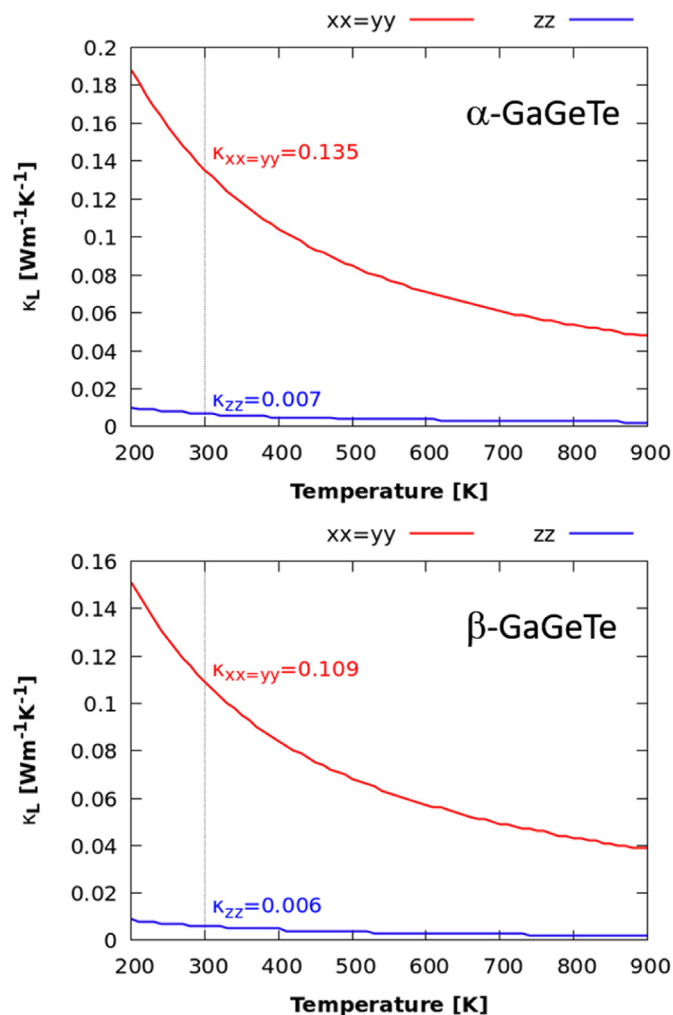


Fig. 6. Lattice thermal conductivity ( $\kappa_L$ ) for bulk  $\alpha$ -GaGeTe (top) and bulk  $\beta$ -GaGeTe (bottom) as a function of temperature along the main directions of the hexagonal unit cell: layer plane ( $xx = yy$ ) and *c* axis ( $zz$ ).

nonmonotonic temperature dependence of the lattice thermal conductivity of Cd<sub>3</sub>As<sub>2</sub> [80].

The ultralow values of lattice thermal conductivity of both polytypes of GaGeTe can be also understood with the frequency-dependent phonon lifetimes at 300 K (Fig. S25). Note that the short phonon lifetimes (below 2 ps) are much lower than those found for SnSe (from 0 to 30 ps) [88]. Moreover, our values of the phonon lifetimes are even lower than those found for ZrTe<sub>5</sub> [89]. The low lifetimes of the phonons indicate a strong scattering rate, which is the main reason for the ultralow lattice thermal conductivity [90]. Consequently, our calculations of phonon lifetimes allow us to explain the nature of the phonons which cause the ultralow lattice thermal conductivity of bulk  $\alpha$ -GaGeTe and  $\beta$ -GaGeTe. We have also to note that both GaGeTe polytypes have large PDOS around 2 THz, thus reinforcing the role of these phonons in the ultralow lattice thermal conductivity. Additionally, a large PDOS is also observed in the mid-frequency region (around 5.2 THz, 173 cm<sup>-1</sup>) in  $\beta$ -GaGeTe. Such a large PDOS is not observed in  $\alpha$ -GaGeTe and allows to explain why mid-frequency phonons of  $\alpha$ -GaGeTe show Fermi resonance while those of  $\beta$ -GaGeTe are not observed due to the strong decay of the phonons in this frequency region, as commented in the previous section.

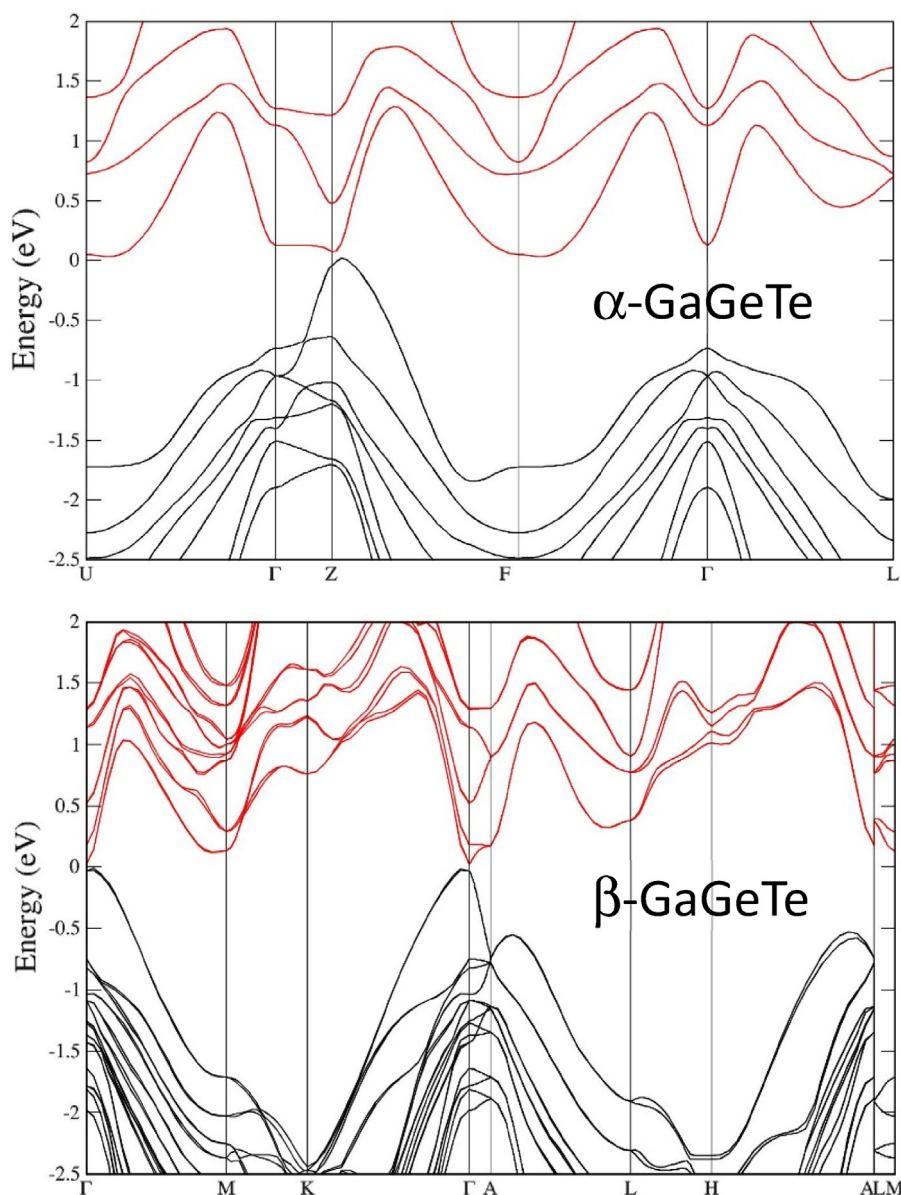
### 4.3. Electronic band structure of bulk $\alpha$ -GaGeTe and $\beta$ -GaGeTe polytypes

Due to the relevance of the electronic and topological properties of GaGeTe, we want to study the electronic band structure of both polytypes of GaGeTe from the theoretical point of view, since this point has raised considerable controversy in the last years [9,13,15,17,18,21]. In this context, a recent work has shown that experimental bandgap-energy measurements agree more with GGA-PBE calculations including SOC interaction than with hybrid HSE06 calculations including SOC interaction that show a considerable overestimation of the bandgap energy [9]. Therefore, we have calculated the electronic band structure of bulk  $\alpha$ -GaGeTe and  $\beta$ -GaGeTe at room conditions using GGA-PBEsol functionals including the SOC interaction (see Fig. 7).

The band structure of bulk  $\alpha$ -GaGeTe is represented along the U- $\Gamma$ -Z-F- $\Gamma$ -L directions of the  $R\bar{3}m$  structure (note that the Z point is

the same as the T point in Refs. [9] and [15]). It can be observed that the valence band maximum (VBM) at room pressure is along the Z-F direction close to the Z point (hereafter Z' point). On the other hand, the lowest conduction band minimum (CBM) is along the U- $\Gamma$  direction close to the U point (hereafter U' point). Additionally, there are also close CBM at the F- $\Gamma$  direction close to the F point (hereafter F' point) and also at the Z-F direction close to the Z point (Z''). In summary, according to our calculations bulk  $\alpha$ -GaGeTe is an indirect Z'-U' semiconductor (almost a semimetal) with a bandgap of 8 meV and with the smallest direct transition (120 meV) located at the Z point.

On the other hand, the band structure of bulk  $\beta$ -GaGeTe is represented along the  $\Gamma$ -M-K- $\Gamma$ -A-L-H-A directions of the  $P6_3mc$  structure, typical of wurzite-like materials. The valence band maximum (VBM) at room pressure is along the  $\Gamma$ -K direction close to the  $\Gamma$  point (hereafter  $\Gamma'$  point) although there is a close maximum along the  $\Gamma$ -M direction. The conduction band minimum



**Fig. 7.** Top: Theoretical electronic band structure of bulk  $\alpha$ -GaGeTe along the main points (U- $\Gamma$ -Z-F- $\Gamma$ -L) of the BZ. Bottom: Theoretical electronic band structure of bulk  $\beta$ -GaGeTe along the main points ( $\Gamma$ -M-K- $\Gamma$ -A-L-H-A) of the BZ.

(CBM) is at the  $\Gamma$  point, although there is also a close minimum near the M point. Therefore, according to our calculations bulk  $\beta$ -GaGeTe is also an indirect semiconductor (almost a semimetal) with small bandgaps: an indirect  $\Gamma'$ - $\Gamma$  bandgap of 3 meV and a direct bandgap at the  $\Gamma$  point of 61 meV; i.e. bulk  $\beta$ -GaGeTe shows even smallest bandgaps than bulk  $\alpha$ -GaGeTe.

Finally, we have calculated the parities of the states at the time-reversal invariant momentum (TRIM) points of the primitive rhombohedral cell of bulk  $\alpha$ -GaGeTe and the primitive hexagonal cell of bulk  $\beta$ -GaGeTe at room conditions in order to check their topological properties by the calculation of the four topological  $Z_2$  invariants  $\nu_0;(\nu_1\nu_2\nu_3)$  proposed by Fu and Kane [91]. If all values are 0 then one has a topologically trivial material, but if any of them is different from 0 one has a topologically non-trivial material. In particular, a strong topological material has  $\nu_0 = 1$  irrespective of the values of  $\nu_1$ ,  $\nu_2$ , and  $\nu_3$ ; while a weak topological material has  $\nu_0 = 0$  and any of the other values different from zero. As found in Refs.[9,15], the products of the parities eigenvalues at all TRIM points of the primitive unit cell classify bulk  $\alpha$ -GaGeTe as a strong Dirac TSM with  $\nu_0;(\nu_1\nu_2\nu_3) = 1; (111)$  that originates from a band inversion of the bulk valence and conduction bands at the Z point of the BZ. On the other hand, the calculated band structure of  $\beta$ -GaGeTe shows a linear dispersion of both conduction and valence bands along the  $\Gamma$ -A direction as expected for a Dirac point. The calculations of the four topological  $Z_2$  invariants for  $\beta$ -GaGeTe show that it is a weak topological semimetal with  $\nu_0;(\nu_1\nu_2\nu_3) = 0; (001)$  that shows a band inversion of the bulk valence and conduction bands at the  $\Gamma$  point of the BZ. Curiously, we have noted that the calculated band structure of  $\beta$ -GaGeTe shows a bandgap that is intermediate between those calculated for two compounds with the same space group as  $\beta$ -GaGeTe, non-centrosymmetric 3D hexagonal LiZnSb [92] and LiZnBi [93]. In fact, Dirac points have been predicted for LiZnBi [93] and both Dirac and Weyl points have been predicted for the intermediate LiZnSb<sub>x</sub>Bi<sub>1-x</sub> Dirac semimetal [94]. Therefore,  $\beta$ -GaGeTe with point group  $C_{6v}$  satisfies all the criteria to be a non-centrosymmetric TSM, as recently discussed [94].

To finish, we must comment that TSMs without inversion symmetry have been much less studied than centrosymmetric TSMs. Theoretical predictions of material candidates for the former are comparatively rare [94,95] and experimental studies are even more scarce [94–96]. Therefore, the present discovery of layered non-centrosymmetric  $\beta$ -GaGeTe as a weak TSM is an important addition to the portfolio of TSMs and provides a framework for the study of quantum non-linear Hall effect, non-linear photocurrent, and non-linear optical properties in these compounds [94–96].

## 5. Conclusions

We have reported a joint experimental and theoretical study of bulk topological semimetal GaGeTe by means of polarized Raman scattering measurements at room conditions under resonant and non-resonant excitation conditions combined with powder X-ray diffraction measurements and *ab initio* calculations. Unexpectedly, we have identified at least two different polytypes of layered GaGeTe in as-grown samples despite only one was supposed to exist. Apart from the centrosymmetric phase (here named  $\alpha$ -GaGeTe) with s.g. *R-3m*, No. 166 and reported in the literature, we have found a non-centrosymmetric phase (here named  $\beta$ -GaGeTe) with s.g. *P6<sub>3</sub>mc*, No. 186 that was not previously known. We have provided the structural parameters and vibrational frequencies at room conditions of both polytypes. Moreover, we have also shown that *ab initio* calculations also suggest the possibility of observing a third polytype of GaGeTe (centrosymmetric  $\gamma$ -GaGeTe) with s.g. *P-3m1* (No. 164) near room conditions; i.e. with the same symmetry

of each of the monolayers of  $\alpha$ -GaGeTe and  $\beta$ -GaGeTe but with a different internal atomic ordering. Correspondingly, we have also provided the theoretical structural parameters and vibrational frequencies at room conditions of  $\gamma$ -GaGeTe for its possible future experimental identification. These results show that GaGeTe is a much more complex material than previously thought and it opens the door to control the polytypism in GaGeTe in order to engineer complex vdW heterostructures with the combination of only three elements (Ga, Ge, and Te).

We have also identified the experimental Raman-active modes of  $\alpha$ -GaGeTe and  $\beta$ -GaGeTe and found that the two mid-frequency Raman-active modes of  $\alpha$ -GaGeTe show a Fermi resonance. This resonance is observed in non-resonant Raman scattering measurements, but it is not observed in resonant Raman scattering measurements. To our knowledge, this on/off Fermi resonance effect has not been observed in solids before. On the other hand, several low-frequency and mid-frequency Raman-active modes of bulk  $\beta$ -GaGeTe are not observed in the RS spectrum likely due to weak Raman scattering cross-sections related to strong anharmonic scattering due to a large phonon density of states.

From lattice dynamics calculations, we have predicted an ultralow lattice thermal conductivity for both bulk  $\alpha$ -GaGeTe and  $\beta$ -GaGeTe. Our results for  $\alpha$ -GaGeTe are in good agreement with recent calculations in  $\alpha$ -GaGeTe monolayers and in other topological materials. Therefore, both bulk  $\alpha$ -GaGeTe and  $\beta$ -GaGeTe are potential candidates for highly efficient thermoelectric materials. Control of the deposition of the two polytypes could lead to the engineering of heterostructures formed by alternate layers of both  $\alpha$  and  $\beta$  polytypes that would allow thermoelectric modules of a single material with an ultralow lattice thermal conductivity that would be even smaller than those shown by individual polytypes.

Finally, we have calculated the electronic band structure of bulk  $\alpha$ -GaGeTe and  $\beta$ -GaGeTe at room conditions and evaluated their topological properties. Both polytypes are indirect bandgap materials and TSMs, being the gap in bulk  $\beta$ -GaGeTe smaller than in bulk  $\alpha$ -GaGeTe. While centrosymmetric  $\alpha$ -GaGeTe is a strong Dirac TSM,  $\beta$ -GaGeTe is a non-centrosymmetric weak TSM. Consequently, they are promising TSMs to find exotic fermions upon gap closure, which can be tuned using appropriate doping or even by applying moderate hydrostatic or uniaxial pressures. Moreover, it is known that breaking inversion symmetry in TSMs can lift the spin degeneracy through Rashba spin splitting and is important for many exotic phenomena, like topological ferroelectricity, pyroelectricity, and multiferroicity. In particular, non-centrosymmetry is essential for the separation of Weyl points with opposite chiral charge. Therefore, GaGeTe offers the opportunity of combining centrosymmetric and non-centrosymmetric TSM properties in a single material.

Now the challenge is to control the growth of each polytype. In this context, we assume that the stability of individual polytypes is largely determined by the defective structure, being the stoichiometry [18] and the preparation temperature [97], which determine the concentration and type of native defects, the decisive factors for the growth of a certain polytype. Native defects can stabilize the respective structure by tuning the Fermi level towards the optimum value and at the same time can reduce the Coulombic repulsion of neighboring sextuple layers. Tuning the defect structure of GaGeTe is difficult when growing single crystals using the Bridgman method, as it is the case of our samples. Only some minor changes could be expected by annealing the samples in vapors of the respective element(s). However, the tuning of the defect structure is expected to be easily done by other growth methods, like those used for preparing thin films.

In summary, we have clarified that there are at least two polytypes in commonly as-grown samples of GaGeTe. Therefore, a proper characterization of this material must be done when

working with it to measure its intrinsic properties and use it in electronic and optoelectronic devices. TSM GaGeTe is a unique material to design and implement complex van der Waals heterostructures, with up to three different centrosymmetric and non-centrosymmetric phases, having the same chemical composition. These heterostructures can be implemented for fundamental studies and in a number of technological applications, including spintronics, thermoelectrics, solar cells, field-effect transistors, photodetectors, and devices for topological applications. We hope our work will help researchers to differentiate between the different polytypes of TSM GaGeTe and will stimulate further studies on these polytypes in bulk and 2D form.

### Author credit statements

F.J. Manjón: Conceptualization, Methodology, Validation, Provision, Writing - Review & Editing, Supervision, Project Administration, and Funding Acquisition, S. Gallego-Parra: Formal analysis, Investigation, Writing - Review & Editing, E. Bandiello: Formal analysis, Investigation, Review, A. Liang: Formal analysis, Investigation, Review, E. Lora da Silva: Software, Validation, Formal analysis, Review, P. Rodríguez-Hernández: Software, Validation, Formal analysis, Review, A. Muñoz: Software, Validation, Formal analysis, Review, S. Radescu: Software, Validation, Formal analysis, Review, A.H. Romero: Software, Validation, Formal analysis, Review, C. Drasar: Resources, Review, D. Errandonea: Formal analysis, Investigation, Validation, Review.

### Declaration of competing interest

The authors declare that they have no known competing financial interests or personal relationships that could have appeared to influence the work reported in this paper.

### Data availability

Data will be made available on request.

### Acknowledgments

This publication is part of the project MALTA Consolider Team network (RED2018-102612-T), financed by MINECO/AEI/10.13039/501100003329; by I + D + i projects PID2019-106383 GB-I/42/43 financed by MCIN/AEI/10.13039/501100011033; and by project PROMETEO/2018/123 (EFIMAT) financed by Generalitat Valenciana. E.B. would like to thank the Universitat Politècnica de València for his postdoctoral contract (Ref. PAID-10-21). AHR was supported by the U.S. Department of Energy (DOE), Office of Science, Basic Energy Sciences under award DE-SC0021375. We also acknowledge the computational resources awarded by XSEDE, a project supported by National Science Foundation grant number ACI-1053575. The authors also acknowledge the support from the Texas Advances Computer Center (with the Stampede2 and Bridges supercomputers). E.L.d.S would like to acknowledge the Network of Extreme Conditions Laboratories (NECL), financed by FCT and co-financed by NORTE 2020, through the program Portugal 2020 and FEDER; the High Performance Computing Chair - a R&D infrastructure (based at the University of Évora; PI: M. Avillez); and for the computational support provided by the HPC center OBLIVION-U. Évora to perform the lattice thermal conductivity calculations. A.L. and D.E. would like to thank the Generalitat Valenciana for the Ph.D. Fellowship no. GRISOLIAP/2019/025.

### Appendix A. Supplementary data

Supplementary data to this article can be found online at <https://doi.org/10.1016/j.mtaadv.2022.100309>.

### References

- [1] M. Zahid Hasan, S.-Y. Xu, I. Belopolski, S.-M. Huang, Discovery of Weyl fermion semimetals and topological Fermi arc states, *Annu. Rev. Condens. Matter Phys.* 8 (2017) 289–309.
- [2] L.M. Schoop, X. Dai, R.J. Cava, R. Ilan, Special topic on topological semimetals—new directions, *Apl. Mater.* 8 (2020), 030401.
- [3] J. Ma, J. Ma, Q.H. Zhang, R.C. Peng, J. Wang, C. Liu, M. Wang, N. Li, M.F. Chen, X.X. Cheng, P. Gao, L. Gu, L.-Q. Chen, P. Yu, J.X. Zhang, C.-W. Nan, Controllable conductive readout in self-assembled, topologically confined ferroelectric domain walls, *Nat. Nanotechnol.* 13 (2018) 947.
- [4] M.S. Bahramy, B.J. Yang, R. Arita, N. Nagaosa, Emergence of non-centrosymmetric topological insulating phase in BiTeI under pressure, *Nat. Commun.* 3 (2012) 679.
- [5] Q. Ma, et al., Observation of the nonlinear Hall effect under time-reversal-symmetric conditions, *Nature* 565 (2019) 337.
- [6] K. Kang, T. Li, E. Sohn, J. Shan, K.F. Mak, *Nonlinear anomalous Hall effect in few-layer WTe<sub>2</sub>*, *Nat. Mater.* 18 (2019) 324.
- [7] Z.H. He, H.M. Weng, *Giant nonlinear Hall effect in twisted bilayer WTe<sub>2</sub>*, *npj Quant. Materials* 6 (2021) 101.
- [8] Z.Z. Du, H.-Z. Lu, X.C. Xie, Nonlinear Hall effects, *Nat. Rev. Phys.* 3 (2021) 744.
- [9] E. Haubold, A. Fedorov, F. Pielhofer, I.P. Rusinov, T.V. Menshchikova, V. Duppl, D. Friedrich, R. Wehrich, A. Pfizner, A. Zeugner, A. Isaeva, S. Thirupathiah, Y. Kushnirenko, E. Rienks, T. Kim, E.V. Chulkov, B. Büchner, S. Borisenko, *Possible experimental realization of a basic Z<sub>2</sub> topological semimetal in GaGeTe*, *Apl. Mater.* 7 (2019), 121106.
- [10] G. Kra, R. Eholie, J. Flahaut, Étude de quelques sections du système ternaire Ga-Ge-Te, *Composé GaGeTe*, C. R. Acad. Sc. Paris - Série C 284 (1977) 889, idem, *Ann. Chim. Fr.* 3, 257 (1978).
- [11] D. Fenske, H.G. von Schnering, GaGeTe, a novel defect tetrahedral structure, *Angew. Chem. Int. Ed.* 22 (1983) 407.
- [12] A. Segura, F.J. Manjón, D. Errandonea, J. Pellicer-Porres, V. Muñoz, G. Tobias, P. Ordejón, E. Canadell, A. San Miguel, Specific features of the electronic structure of III–VI layered semiconductors: recent results on structural and optical measurements under pressure and electronic structure calculations, *Phys. Status Solidi* 235 (2003) 267.
- [13] J. Zhang, S.S. Li, W.X. Ji, C.W. Zhang, P. Li, S.F. Zhang, P.J. Wang, S.S. Yan, Two-dimensional GaGeTe film: a promising graphene-like material with tunable band structure and high carrier mobility, *J. Mater. Chem. C* 5 (2017) 8847.
- [14] E. López-Cruz, M. Cardona, E. Martínez, Raman spectrum and lattice dynamics of GaGeTe, *Phys. Rev. B* 29 (1984) 5774.
- [15] F. Pielhofer, T.V. Menshchikova, I.P. Rusinov, A. Zeugner, I. Yu Sklyadnaya, R. Heid, K.-P. Bohnen, P. Golub, A.I. Baranov, E.V. Chulkov, A. Pfizner, M. Ruck, A. Isaeva, Designing 3D topological insulators by 2D-Xene (X = Ge, Sn) sheet functionalization in GaGeTe-type structures, *J. Mater. Chem. C* 5 (2017) 4752.
- [16] C.M. Ke, Y.P. Wu, J.P. Zhou, Z.M. Wu, ChM. Zhang, X. Li, J.Y. Kang, Modification of the electronic and spintronic properties of monolayer GaGeTe with a vertical electric field, *J. Phys. D Appl. Phys.* 52 (2019), 115101.
- [17] F.-B. Zheng, L. Zhang, J. Zhang, P.-j. Wang, Ch-W. Zhang, Germanene/GaGeTe heterostructure: a promising electric-field induced data storage device with high carrier mobility, *Phys. Chem. Chem. Phys.* 22 (2020) 5163.
- [18] C. Drasar, V. Kucek, L. Benes, P. Lostak, M. Vlcek, Thermoelectric properties and nonstoichiometry of GaGeTe, *J. Solid State Chem.* 193 (2012) 42.
- [19] V. Kucek, C. Drasar, J. Navratil, L. Benes, P. Lostak, Optical and transport properties of GaGeTe single crystals, *J. Cryst. Growth* 380 (2013) 72.
- [20] W. Wang, L. Li, Z. Zhang, J. Yang, D. Tang, T. Zhai, Ultrathin GaGeTe p-type transistors, *Appl. Phys. Lett.* 111 (2017), 203504.
- [21] S.R. Tamalampudi, G. Dushaq, J.E. Villegas, N.S. Rajput, B. Paredes, E. Elamurugu, M.S. Rasras, Short-wavelength infrared (SWIR) photodetector based on multi-layer 2D GaGeTe, *Opt Express* 29 (2021), 442845.
- [22] A. Sharafiev, V. Gnezdilov, R. Sankar, F.C. Chou, P. Lemmens, *Optical phonon dynamics and electronic fluctuations in the Dirac semimetal Cd<sub>3</sub>As<sub>2</sub>*, *Phys. Rev. B* 95 (2017), 235148.
- [23] X. Yuan, C. Zhang, Y. Zhang, Z.B. Yan, T.R. Lyu, M.Y. Zhang, Z.L. Li, C.Y. Song, M.H. Zhao, P.L. Leng, M. Ozerov, X.L. Chen, N.L. Wang, Y. Shi, H.G. Yan, F.X. Xiu, The discovery of dynamic chiral anomaly in a Weyl semimetal NbAs, *Nat. Commun.* 11 (2020) 1259.
- [24] B. Xu, Y.M. Dai, L.X. Zhao, K. Wang, R. Yang, W. Zhang, J.Y. Liu, H. Xiao, G.F. Chen, S.A. Trugman, J.-X. Zhu, A.J. Taylor, D.A. Yarotski, R.P. Prasankumar, X.G. Qiu, Temperature-tunable Fano resonance induced by strong coupling between Weyl fermions and phonons in TaAs, *Nat. Commun.* 8 (2016), 14933.
- [25] W. Zhou, H. Gao, J.R. Zhang, R.Y. Fang, H. Song, T. Hu, A. Stroppa, L. Li, X.F. Wang, S.C. Ruan, W. Ren, Lattice dynamics of Dirac node-line semimetal ZrSiS, *Phys. Rev. B* 96 (2017), 064103.
- [26] K.Y. Zhang, T. Wang, X.Q. Pang, F. Han, S.-L. Shang, N.T. Hung, Z.-K. Liu, M.D. Li, R. Saito, S.X. Huang, Anisotropic Fano resonance in the Weyl semimetal candidate LaAlSi, *Phys. Rev. B* 102 (2020), 235162.
- [27] K.Y. Zhang, X.Q. Pang, T. Wang, F. Han, S.-L. Shang, N.T. Hung, A.R.T. Nugraha,

- Z.-K. Liu, M.D. Li, R. Saito, S.X. Huang, Anomalous phonon-mode dependence in polarized Raman spectroscopy of the topological Weyl semimetal TaP, *Phys. Rev. B* 101 (2020), 014308.
- [28] H.H. Guo, T. Yang, M. Yamamoto, L. Zhou, R. Ishikawa, K. Ueno, K. Tsukagoshi, Z.D. Zhang, M.S. Dresselhaus, R. Saito, *Double resonance Raman modes in monolayer and few-layer MoTe<sub>2</sub>*, *Phys. Rev. B* 91 (2015), 205415.
- [29] A. Sharafiev, V. Gnezdilov, R. Sankar, F.C. Chou, P. Lemmens, *Optical phonon dynamics and electronic fluctuations in the Dirac semimetal Cd<sub>3</sub>As<sub>2</sub>*, *Phys. Rev. B* 95 (2017), 235148.
- [30] K. Zhang, C.H. Bao, Q.Q. Gu, X. Ren, H.X. Zhang, K. Deng, Y. Wu, Y. Li, J. Feng, S.Y. Zhou, *Raman signatures of inversion symmetry breaking and structural phase transition in type-II Weyl semimetal MoTe<sub>2</sub>*, *Nat. Commun.* 7 (2016), 13552.
- [31] J.Y. Li, P.-F. Liu, C. Zhang, X.B. Shi, S.J. Jiang, W.Z. Chen, H.B. Yin, B.-T. Wang, *Lattice vibrational modes and phonon thermal conductivity of single-layer GaGeTe*, *J. Materiomics* 6 (2020) 723–728.
- [32] A.F. Goncharov, *Raman spectroscopy at high pressures*, *Int. J. Spectrosc.* 617528 (2012).
- [33] P. Hohenberg, W. Kohn, *Inhomogeneous electron gas*, *Phys. Rev. B* 36 (1964) B864–B871.
- [34] G. Kresse, J. Furthmüller, *Efficiency of ab-initio total energy calculations for metals and semiconductors using a plane-wave basis set*, *Comput. Mater. Sci.* 6 (1996) 15.
- [35] P.E. Blöchl, *Projector augmented-wave method*, *Phys. Rev. B* 50 (1994), 17953.
- [36] G. Kresse, D. Joubert, *From ultrasoft pseudopotentials to the projector augmented-wave method*, *Phys. Rev. B* 59 (1999) 1758.
- [37] J.P. Perdew, A. Ruzsinszky, G.I. Csonka, O.A. Vydrov, G.E. Scuseria, L.A. Constantin, X. Zhou, K. Burke, *Restoring the density-gradient expansion for exchange in solids and surfaces*, *Phys. Rev. Lett.* 100 (2008), 136406.
- [38] J.P. Perdew, K. Burke, M. Ernzerhof, *Generalized gradient approximation made simple*, *Phys. Rev. Lett.* 77 (1996) 3865.
- [39] S. Grimme, J. Antony, S. Ehrlich, H. Krieg, *A consistent and accurate ab initio parametrization of density functional dispersion correction (DFT-D) for the 94 elements H-Pu*, *J. Chem. Phys.* 132 (2010), 154104.
- [40] H.J. Monkhorst, J.D. Pack, *Special points for Brillouin-zone integrations*, *Phys. Rev. B* 13 (1976) 5188.
- [41] K. Parlinski, *Phonon code*, see <http://www.computingformaterials.com/>.
- [42] K. Parlinski, Z.-Q. Li, Y. Kawazoe, *First-principles Determination of the soft Mode in cubic ZrO<sub>2</sub>*, *Phys. Rev. Lett.* 78 (1997) 4063.
- [43] P. Canepa, R.M. Hanson, P. Ugliengo, M. Alfreidsson, J-ICE, *A new jmol interface for handling and visualizing crystallographic and electronic properties*, *J. Appl. Crystallogr.* 44 (2011) 225–229.
- [44] A.H. Romero, D.C. Allan, B. Amadon, G. Antonius, T. Applencourt, L. Baguet, J. Bieder, et al., *ABINIT: overview and focus on selected capabilities*, *J. Chem. Phys.* 152 (2020), 124102.
- [45] X. Gonze, F. Jollet, F.A. Araujo, D. Adams, B. Amadon, T. Applencourt, C. Audouze, J.M. Beuken, J. Bieder, A. Bokhanchuk, E. Bousquet, *Recent developments in the ABINIT software package*, *Comput. Phys. Commun.* 205 (2016) 106–131.
- [46] M. Amsler, S. Goedecker, *Crystal structure prediction using the minima hopping method*, *J. Chem. Phys.* 133 (2010), 224104.
- [47] S. Singh, W. Ibarra-Hernández, I. Valencia-Jaime, G. Avendaño-Franco, A.H. Romero, *Investigation of novel crystal structures of Bi–Sb binaries predicted using the minima hopping method*, *Phys. Chem. Chem. Phys.* 18 (2016) 29771–29785.
- [48] A. Togo, L. Chaput, I. Tanaka, *Distributions of phonon lifetimes in Brillouin zones*, *Phys. Rev. B* 91 (2015), 094306.
- [49] N. Claussen, B. Andrei Bernevig, N. Regnault, *Detection of topological materials with machine learning*, *Phys. Rev. B* 101 (2020), 245117.
- [50] D.W. Boukhvalov, B. Gürbulak, S. Duman, L. Wang, A. Politano, L.S. Caputi, G. Chiarello, A. Cupolillo, *The advent of indium selenide: synthesis, electronic properties, ambient stability and applications*, *Nanomaterials* 7 (2017) 372.
- [51] S.Y. Lim, J.-U. Lee, J.H. Kim, L.B. Liang, X.R. Kong, T.T. Huong Nguyen, Z.H. Lee, S.L. Chof, H. Cheong, *Polytypism in few-layer gallium selenide*, *Nanoscale* 12 (2020) 8563.
- [52] E. Kroumova, M.I. Arroyo, J.M. Perez-Mato, A. Kirov, C. Capillas, S. Ivantchev, H. Wondratschek, *Bilbao crystallographic server: useful databases and tools for phase-transition studies*, *Phase Transitions* 76 (2003) 155–170.
- [53] F.J. Manjón, S. Gallego-Parra, P. Rodríguez-Hernández, A. Muñoz, C. Drasar, V. Muñoz-Sanjosé, O. Oeckler, *Anomalous Raman modes in tellurides*, *J. Mater. Chem. C* 9 (2021) 6277.
- [54] G.P. Lindberg, B.A. Weinstein, *Precipitation of anion inclusions and plasticity under hydrostatic pressure in II–VI crystals*, *Phys. Rev. B* 94 (2016), 134102.
- [55] *The Strong Divergence of the Dielectric Constant along the C axis Due to the Small Bandgap of  $\beta$ -GaGeTe Has Prevented Us from Simulating its RS Spectrum at Room Conditions.*
- [56] *A Thorough Analysis of the Behavior of All the Raman-Active Modes of  $\alpha$ -GaGeTe (Also for  $\beta$ -GaGeTe) under Compression Is Out of the Scope of This Work and Will Be provided in Forthcoming Papers.*
- [57] J. Serrano, F.J. Manjón, A.H. Romero, F. Widulle, R. Lauck, M. Cardona, *Dispersive phonon linewidths: the E<sub>2</sub> Phonons of ZnO*, *Phys. Rev. Lett.* 90 (2003), 055510.
- [58] J. Serrano, M. Cardona, T.M. Ritter, B.A. Weinstein, A. Rubio, C.T. Lin, *Pressure and temperature dependence of the Raman phonons in isotopic  $\gamma$ -CuI*, *Phys. Rev. B* 66 (2002), 245202.
- [59] B.A. Weinstein, G.J. Piermarini, *Raman scattering and phonon dispersion in Si and GaP at very high pressure*, *Phys. Rev. B* 12 (1975) 1172.
- [60] B.A. Weinstein, *Pressure dependent optical phonon anharmonicity in GaP*, *Solid State Commun.* 20 (1976) 999–1003.
- [61] S. Ves, I. Loa, K. Syassen, F. Widulle, M. Cardona, *Raman lineshapes of GaP under pressure*, *Phys. Status Solidi* 223 (2001) 241.
- [62] V.V. Ursaki, F.J. Manjón, K. Syassen, I.M. Tiginyanu, G. Irmer, J. Monecke, *Raman-active modes of porous gallium phosphide at high pressures and low temperatures*, *J. Phys. Condens. Matter* 14 (2002) 13879–13887.
- [63] M.P. Jackson, M.P. Halsall, M. Güngerich, P.J. Klar, W. Heimbrot, J.F. Geisz, *Vibrational properties of GaP and GaP<sub>1-x</sub>N<sub>x</sub> under hydrostatic pressures up to 30 GPa*, *Phys. Status Solidi* 244 (2007) 336–341.
- [64] G. Kanellis, W. Kress, H. Bilz, *Fermi resonance in the phonon spectra of copper halides*, *Phys. Rev. Lett.* 56 (1986) 938.
- [65] F. Widulle, T. Ruf, A. Göbel, E. Schönherr, M. Cardona, *Raman study of the anomalous TO phonon structure in GaP with controlled isotopic composition*, *Phys. Rev. Lett.* 82 (1999) 5281.
- [66] C. Ulrich, A. Göbel, K. Syassen, M. Cardona, A. Cros, A. Cantarero, *Raman scattering in CuCl under pressure*, *Phys. Status Solidi* 211 (1999) 287–292.
- [67] C. Ulrich, A. Göbel, K. Syassen, M. Cardona, *Pressure-induced disappearance of the Raman anomaly in CuCl*, *Phys. Rev. Lett.* 82 (1999) 351.
- [68] F.J. Manjón, J. Serrano, I. Loa, K. Syassen, C.T. Lin, M. Cardona, *Effect of pressure on the Raman anomaly of zinc-blende CuBr and Raman spectra of high-pressure phases*, *Phys. Rev. B* 64 (2001), 064301.
- [69] F.J. Manjón, J. Serrano, I. Loa, K. Syassen, C.T. Lin, M. Cardona, *Effect of pressure on the anomalous Raman spectrum of CuBr*, *Phys. Status Solidi* 223 (2001) 331.
- [70] J.A. Sans, R. Vilaplana, E. Lora da Silva, C. Popescu, V.P. Cuenca-Gotor, A. Andrada-Chacón, J. Sánchez-Benitez, Ó. Gomis, A.L.J. Pereira, P. Rodríguez-Hernández, A. Muñoz, D. Daisenberger, B. García-Domene, A. Segura, R. Errandonea, R.S. Kumar, O. Oeckler, P. Urban, J. Contreras-García, F.J. Manjón, *Characterization and Decomposition of the Natural van der Waals SnSb<sub>2</sub>Te<sub>4</sub> under compression*, *Inorg. Chem.* 59 (2020) 9900.
- [71] K. Aoki, H. Yamawaki, M. Sakashita, *Pressure-tuned Fermi resonance in ice VII*, *Science* 268 (1995) 1322.
- [72] F. Rasetti, *Raman effect in gases*, *Nature* 123 (1929) 205.
- [73] E. Fermi, *Über den Ramaneffekt des Kohlendioxyds*, *Z. Phys.* 71 (1931) 250.
- [74] D. Kalita, M. Amato, A. Artaud, L. Marty, V. Bouchiat, J. Coraux, C. Brouder, M. Lazzeri, N. Bendiab, *Fermi resonance in the Raman spectrum of graphene*, *Phys. Rev. B* 102 (2020), 075436.
- [75] G. Herzberg, *Molecular Spectra and Molecular Structure*, vol. II, Van Nostrand, New York, 1996.
- [76] O. Madelung (Ed.), *Semiconductors - Basic Data*, Springer-Verlag, Berlin, 1991, p. 93.
- [77] J.F. Scott, T.C. Damen, R.C.C. Leite, W.T. Silfvast, *Resonant Raman effect in the indirect gap semiconductor gallium phosphide*, *Solid State Commun.* 7 (1969) 953.
- [78] M.V. Hobden, J.P. Russell, *The Raman spectrum of gallium phosphide*, *Phys. Lett.* 13 (1964) 39.
- [79] R.S. Krishnan, N. Krishnamurthy, *The Raman spectrum of gallium phosphide*, *J. Phys.* 26 (1965) 630.
- [80] S. Yue, H.T. Chorsi, M. Goyal, T. Schumann, R. Yang, T. Xu, B. Deng, S. Stemmer, J.A. Schuller, B. Liao, *Soft phonons and ultralow lattice thermal conductivity in the Dirac semimetal Cd<sub>3</sub>As<sub>2</sub>*, *Phys. Rev. Research* 1 (2019), 033101.
- [81] E. Lora da Silva, A. Leonardo, T. Yang, M.C. Santos, R. Vilaplana, S. Gallego-Parra, A. Bergara, F.J. Manjón,  *$\beta$ -As<sub>2</sub>Te<sub>3</sub>: pressure-induced three-dimensional Dirac semimetal with ultralow room-pressure lattice thermal conductivity*, *Phys. Rev. B* 104 (2021), 024103.
- [82] W.G. Zeier, A. Zevalkink, Z.M. Gibbs, G. Hautier, M.G. Kanatzidis, G.J. Snyder, *Thinking like a chemist: intuition in thermoelectric materials*, *Ang. Chem. Int. Ed.* 55 (2016) 6826–6841.
- [83] J.P. Heremans, R.J. Cava, N.J.N.R.M. Samarth, *Tetradymites as thermoelectrics and topological insulators*, *Nat. Rev. Mater.* 2 (2017) 1–21.
- [84] I.T. Witting, T.C. Chasapis, F. Ricci, M. Peters, N.A. Heinz, G. Hautier, G.J. Snyder, *The thermoelectric properties of bismuth telluride*, *Adv. Electron. Mater.* 5 (2019), 1800904.
- [85] K. Pal, S. Anand, U.V. Waghmare, *Thermoelectric properties of materials with nontrivial electronic topology*, *J. Mater. Chem. C* 3 (2015), 12130.
- [86] J.-B. Vaney, J. Carreaud, G. Delaizir, A. Pradel, A. Piarristeguy, C. Morin, E. Alleno, J. Monnier, A.P. Goncalves, C. Candolfi, et al., *High-temperature thermoelectric properties of Sn-doped  $\beta$ -As<sub>2</sub>Te<sub>3</sub>*, *Adv. Electron. Mater.* 1 (2015), 1400008.
- [87] J.-B. Vaney, G. Delaizir, A. Piarristeguy, J. Monnier, E. Alleno, E.B. Lopes, A.P. Goncalves, A. Pradel, A. Dauscher, C. Candolfi, B. Lenoir, *High-temperature thermoelectric properties of the  $\beta$ -As<sub>2-x</sub>Bi<sub>x</sub>Te<sub>3</sub> solid solution*, *Apl. Mater.* 4 (2016), 104901.
- [88] R. Guo, X. Wang, Y. Kuang, B. Huang, *First-principles study of anisotropic thermoelectric transport properties of IVVI semiconductor compounds SnSe and SnS*, *Phys. Rev. B* 92 (2015), 115202.
- [89] S. Yue, B. Deng, Y. Liu, Y. Quan, R. Yang, B. Liao, *Phonon softening near topological phase transitions*, *Phys. Rev. B* 102 (2020), 235428.
- [90] C. Wang, Y.B. Chen, S.-H. Yao, J. Zhou, *Low lattice thermal conductivity and high thermoelectric figure of merit in Na<sub>2</sub>MgSn*, *Phys. Rev. B* 99 (2019), 024310.
- [91] L. Fu, C.L. Kane, *Topological insulators with inversion symmetry*, *Phys. Rev. B* 76 (2007), 045302.

- [92] G.K.H. Madsen, Automated search for new thermoelectric materials: the case of LiZnSb, *J. Am. Chem. Soc.* 128 (2006), 12140.
- [93] W.D. Cao, P. Tang, Y. Xu, J. Wu, B.-L. Gu, W.H. Duan, Dirac semimetal phase in hexagonal LiZnBi, *Phys. Rev. B* 96 (2017), 115203.
- [94] H. Gao, J. Strockoz, M. Frakulla, J.W.F. Venderbos, H.M. Weng, Non-centrosymmetric topological Dirac semimetals in three dimensions, *Phys. Rev. B* 103 (2021), 205151.
- [95] J.H. Li, Z.T. Zhang, C. Wang, H.Q. Huang, B.-L. Gu, W.H. Duan, Topological semimetals from the perspective of first-principles calculations, *J. Appl. Phys.* 128 (2020), 191101.
- [96] N.Z. Wang, J.-Y. You, A.F. Wang, X.Y. Zhou, Z.W. Zhang, S. Lai, H.-J. Tien, T.-R. Chang, Y.-P. Feng, H. Lin, G.Q. Chang, W.-B. Gao, Nonlinear Hall Effect with Non-centrosymmetric Topological Phase in ZrTe5, arXiv:2202.07143v1.
- [97] K. Sraitrova, J. Cizek, V. Holy, T. Plechacek, L. Benes, M. Jarosova, V. Kucek, C. Drasar, Vacancies in SnSe single crystals in a near-equilibrium state, *Phys. Rev. B* 99 (2019), 035306.